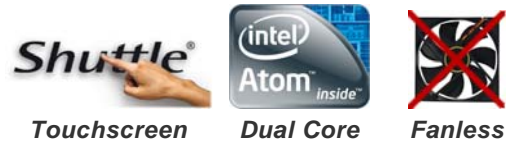


### Fanless All-in-one Touchscreen PC without operating system

The Shuttle X 5031XA is an all-in-one PC boasting a 39.6cm (15.6-inch) LCD touchscreen powered by Intel's dual core Atom processor D2550. This system provides 2 GB DDR3 memory, 320 GB hard disk and it comes without operation system. Equipped with Intel's integrated graphics, it provides generous performance for daily computing with internet and office applications. An external display can be connected via HDMI or D-Sub. A 2.0MP webcam, built-in speakers, card reader, WLAN and other features leave nothing you could ask for. Have any applications start up quickly by just touching the screen for working most swiftly and conveniently.

### Shuttle All-in-One PC **X5031XA White** **System**



#### Feature Highlights

<b>All-in-one Design</b>	<ul style="list-style-type: none"> <li>Fanless cooling</li> <li>All-in-One PC with resistive touchscreen</li> <li>Small: 391 x 327 x 42 mm (WHL)</li> <li>Stand can also be used as a handle</li> <li>100mm VESA mount capable</li> <li>External, fanless power supply (40W)</li> </ul>
<b>Display &amp; Graphics</b>	<ul style="list-style-type: none"> <li>39.6cm (15.6") resistive touchscreen with 1366x768 resolution</li> <li>Integrated graphics (GMA3650, DX9)</li> <li>HDMI + D-Sub/VGA Video output</li> </ul>
<b>CPU &amp; Chipset</b>	<ul style="list-style-type: none"> <li>CPU: Intel ATOM D2550 Dual Core 1.86 GHz</li> <li>Chipset: NM10 (Platform Controller Hub)</li> </ul>
<b>Storage</b>	<ul style="list-style-type: none"> <li>2 GB DDR3-1333 SO-DIMM memory</li> <li>320 GB SATA hard disk (6.35cm/2.5")</li> </ul>
<b>Operating System</b>	<ul style="list-style-type: none"> <li>Operating system not included</li> <li>Compatible with Windows 7, 32 Bit</li> </ul>
<b>Connectivity</b>	<ul style="list-style-type: none"> <li>HDMI, D-Sub, 4x USB, Microphone-in, Line-out</li> <li>Gigabit LAN, Wireless LAN (n)</li> <li>Optional: 2x RS232 und 1x LPT (PCL69)</li> </ul>
<b>Built-in</b>	<ul style="list-style-type: none"> <li>SD Cardreader</li> <li>2.0 Megapixel webcam</li> <li>2x 2W speakers</li> <li>Electret Condenser Microphone</li> </ul>
<b>Power Supply</b>	<ul style="list-style-type: none"> <li>40W, fanless, Energy Star 5 compliant</li> </ul>
<b>Warranty</b>	<ul style="list-style-type: none"> <li>24 months Bring-in Service</li> </ul>



Shuttle order number:  
PAC-X50V3L11

Images for illustration purposes only.

## Shuttle X 5031XA - Product Features

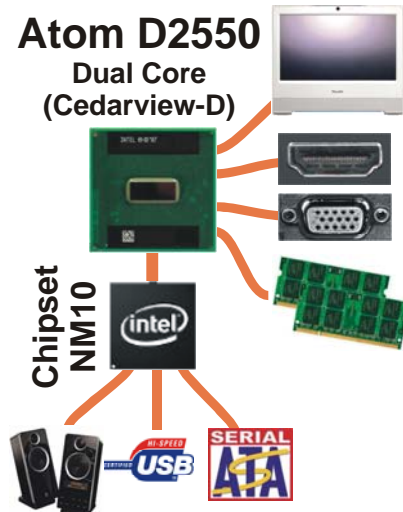


### All applications at your fingertips

The innovative touchscreen technology delivers the simplest operation possible and makes the screen the centre of action. Its high-quality design lets you control the whole range of multimedia - music, movies, video playback and web browsers start by just touching the screen.

### Atom D2550

Dual Core  
(Cedarview-D)

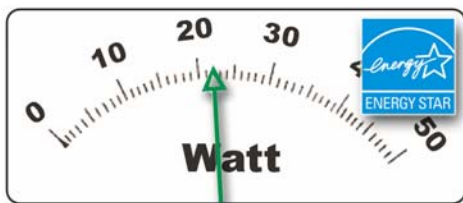


### Atom D2550 processor integrates the graphics core

Shuttle X 5031XA is equipped with Intel's Atom processor D2550, codenamed Cedarview. It brings both the graphics core with HDMI and D-Sub ports and the memory controller on-die which helps reduce the thermal output and memory latency. The CPU is connected to the Southbridge NM10.

### Dual Core. Do more.

Shuttle always uses the dual-core variant of Intel's Atom processors and thus integrates the Atom D2550. This boosts the system performance significantly with particular regards to multi-threaded applications.



### Power saving

The new X 5031XA version is equipped with an Intel Atom D2550 Dual Core processor and eco-friendly ENERGY STAR 5.0 qualified power adapter that consumes about 20~27 Watt only.



### All-in-one PC

Your complete PC system with many components already built in comes in just one single device! This includes the webcam, microphone, display, touchscreen input interface, wireless LAN module and speakers. Helps you save on space, looks simply stylish, reduces cable clutter.

### HDMI and D-Sub/VGA Port

The digital HDMI port or the analog D-Sub/VGA port can be used to connect a secondary external LCD display or a beamer to the PC. The integrated graphics unit supports both clone mode and extended mode.





### Built-In Webcam and Microphone

The built-in 2.0 mega pixel webcam and microphone makes it easy to take pictures or stream live images from across the internet – and connect in real-time with friends, family, and colleagues.



### Slim and chic

Designed as space-savers, this 15.6 inch all-in-one desktop PC only measures 3.6cm in depth.



### Fanless - as quiet as 22dBA

The Shuttle X 5031XA features a cooling system that combines an integrated heatsink with thermal pads - and removes the fan. As an additional benefit, it's not only quiet but also dust-free.



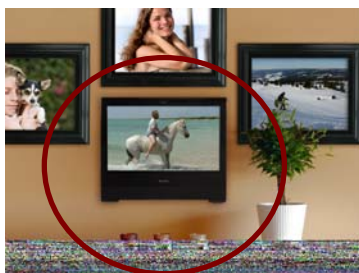
### Carrying handle

Cleverly, the stand can be pulled upwards to serve as a handle making the X 5031XA easy to move and carry around.



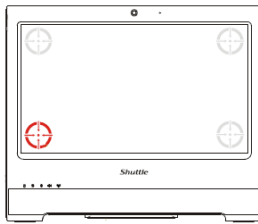
### Kensington Lock

This is a small, metal-reinforced hole as part of an anti-theft system. (The lock and cable are not included.)



### VESA mounting

The stand on the rear can easily be removed to unveil four VESA mounting screw holes that can be used for mounting arms and other mounting devices from a variety of manufacturers.



### 4 Point Touch Screen Calibration

The X 5031XA features a precise touchscreen input device. This can easily be calibrated with the eGalax touch software by just pointing on each corner of the screen using the stylus pen. With this four-point calibration, you can use demanding graphical user interfaces (GUI) that require precise cursor control to properly activate small icons, buttons, scroll bars, etc.



### Optional serial and parallel legacy ports

Legacy ports are widely popular among industrial applications. Thus, the X 5031XA optionally provides one parallel and two serial ports on the back panel (Accessory PLC69).



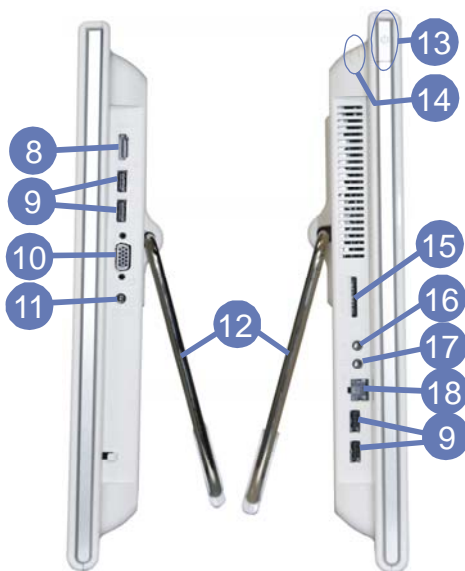
### Tiny power adapter

The external 40W power adapter is virtually noiseless and can easily be hidden behind the desk thanks to its tiny dimensions. Dimensions: 89.5 x 37 x 26.5 mm (LWH) = 88ml

### Shuttle X 5031XA Overview (Connectors, buttons, etc.)



- 1 Touchscreen LCD display
- 2 Webcam
- 3 Microphone
- 4 Power on LED
- 5 Hard disk LED
- 6 Wireless LAN LED (Wifi)
- 7 Stereo speakers
- 8 HDMI video output
- 9 4x USB 2.0 connectors
- 10 D-Sub VGA video output
- 11 DC-input for power adapter
- 12 Stand (handle)
- 13 Power on button
- 14 Stylus pen with holder
- 15 Card reader
- 16 Microphone input
- 17 Audio line out (head phone)
- 18 RJ45 Gigabit LAN connector
- 19 Kensington lock hole
- 20 Vesa mount
- 21 2x COM, 1x Par. Ports (optional accessory PCL69)

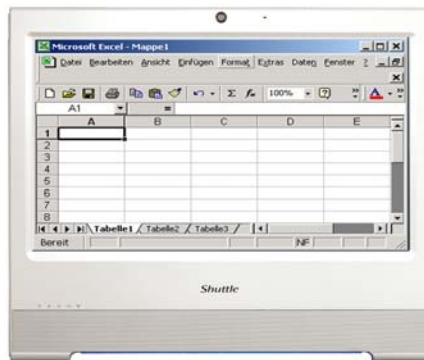




## Shuttle X 5031XA – Range of Applications



**Entertainment**  
Music, Movies,  
Photo gallery, TV\*  
\*) TV tuner USB stick  
required



**Work**  
Banking, Shopping,  
Office, Stock trading



**Control**  
Surveillance,  
Home Automation,  
Control device



**P.O.S.**  
Point of sales



**Education**  
In schools, at home,  
for children and adults



**Communication**  
Email, VoIP, Messenger,  
Blog, Video Conferencing



**Digital Signage**  
Visual advertising,  
entertainment, displaying  
information in public areas

## Shuttle X 5031XA White – Specifications

<i>Fanless and silent</i>	<p>Passive cooling, no fan noise at all</p> <p>Perfect to be used in noise-sensitive environments</p> <p>Fanless, dust-free and thus virtually maintenance-free</p>
<i>Chassis</i>	<p>Colour: white, matt / non-glossy</p> <p>Dimensions: 391.3 x 327 x 42 mm (WxHxL)</p> <p>100mm VESA mount capable</p> <p>Mounting hole for Kensington lock</p> <p>Weight: 2.93 kg net, 4.2 kg gross</p>
<i>Operating system</i>	<p>This system comes without operating system.</p> <p>It is compatible with Windows 7 32 bit version</p>
<i>Touch-screen</i>	<p>Touchscreen function support fingertip input</p> <p>Resistance and single touch technology</p> <p>Including stylus pen for the touchscreen</p>
<i>39.6cm (15.6-inch) display</i>	<p>39.6cm/15.6" LCD display, ratio: 16:9 wide screen panel</p> <p>Resolution: 1366x768 = 1.05 Megapixels</p> <p>Backlight unit: High power LED</p>
<i>Processor</i>	<p>Intel Dual Core Atom processor D2550 (Codename: Cedarview)</p> <p>Intel Hyper-Threading technology: 2-threads per core</p> <p>32 nm manufacturing process, Micro-FCBGA11 package</p> <p>Intel 64 architecture, Core clock: 2.13 GHz</p> <p>L2 Cache: 1024kB , TDP: max. 10W</p> <p>Supports SSE2, SSE3, SSSE3, Execute Disable Bit</p> <p>Integrated North Bridge with controller for memory and graphics</p> <p>Passive cooling without any fan</p>
<i>Integrated Graphics</i>	<p>The Graphics Processing Unit (GPU) is integrated into the processor</p> <p>Intel GMA 3650, Graphics Base Frequency: 640 MHz, supports DirectX 9</p> <p>Maximum shared memory: 8MB pre-allocated</p> <p>plus 384MB Video Memory Technology (DVMT)</p> <p>Two video outputs: HDMI v1.3 and D-Sub (VGA)</p> <p>Supports dual display in clone or extended model</p>
<i>Chipset</i>	<p>Intel® NM10 Express Chipset</p> <p>Platform Controller Hub (PCH), Code name: Tiger Point</p>
<i>BIOS</i>	<p>AMI BIOS in a 8Mbit Flash ROM supports PnP, ACPI 2.0</p> <p>Supports external USB flash memory card boot up (not from the card reader)</p> <p>Supports Power fail resume / AC power on state / always on / always off</p> <p>Supports Wake-on-LAN (WOL) from S3, S3, S5 ACPI states</p> <p>Supports Unified Extensible Firmware Interface (UEFI) [1]</p>

Memory	2 GB DDR3-1333 / PC3-10667 SO-DIMM memory module with 204 pins Effective clock frequency: 1066 MHz Maximum memory which can be installed: 4GB (2x 2GB or 1x 4GB)
Hard disk	320 GB Serial ATA hard disk in 6.35cm/2.5" form factor
Card reader	Integrated card reader supports SD, SDHC and SDXC memory flash cards
Webcam	Integrated Webcam module with 2.0 Megapixel (1600x1200) resolution
Microphone Speakers	Front panel with integrated Electret Condenser Microphone and 2x 2W speakers
Integrated Audio	IDT92HD81 Audio Codec with Azalia support Two analog audio connectors (3.5mm): 1) Line out (head phone) 2) microphone input Digital Audio is supported via the HDMI port.
Wired Network	RJ45 connector supports Gigabit LAN at 10/100/1000 Mbit/sec. Network controller Realtek RTL8411 Supports Wake-on-LAN (WOL) from S3, S3, S5 ACPI states
Wireless LAN (Wifi)	Supports IEEE 802.11b/g/n, max. 150Mbps up-/downstream Security: WPA/WPA2(-PSK), WEP 64/128bit, IEEE 802.11x/i Half size Mini-PCIe-Card
Connectors	HDMI 1.3 (supports digital video and digital audio) VGA connector (D-Sub 15 pol., analog) 4x USB 2.0 (2x left side, 2x right side) Network (LAN, RJ45) Audio Line-out (head phone) Microphone input DC input for external power adapter optional: 2x COM, 1xLPT (Accessory: PCL69)
LEDs and buttons	Power button Power LED (blue) Hard disk LED (orange) Wireless-LAN / Wifi LED (green)
Power adapter	External 40W AC/DC power adapter (fanless) Energy Star 5 compliant AC Input: 100~240V AC, 50~60Hz DC Output: 19V DC, max. 2.1A Dimensions: 27 x 37 x 90 mm DC Connector: 5.5/2.5mm (outer/inner diameter)



<b>Included Accessories</b>	40W Power Adapter Power cord
<b>Optional Accessories</b>	COM/LPT adapter module PCL69: 1x parallel and 2x serial (RS-232) Carrying bag PF55
<b>Certifications</b>	EMI: CE, FCC, BSMI, C-Tick, CCC Safety: CB, BSMI, ETL Other compliances: RoHS, Eup Lot6
<b>Environment</b>	Operating temperature: 0~35°C Humidity: 10~90%
<b>Conformity</b>	This device is classed as a technical information equipment (ITE) in class B and is intended for use in living room and office. The CE-mark approves the conformity by the EU-guidelines: - EMV-guideline 89/336/EEG electromagnetic tolerance - LVD-guideline 73/23/EEG use of electric devices within certain voltage-limits

## Shuttle X 50V3L Series – Product Comparison

Model ->	X50V3L Barebone	X 5031XA System	X 5031TA System
<b>Type</b>	AIO Barebone	AIO System	AIO System
<b>Operating System</b>	---	---	Windows 7 Home Premium 32 bit
<b>Memory</b>	---	2 GB DDR3-1333	2 GB DDR3-1333
<b>Hard disk</b>	---	320 GB	320 GB
<b>Order No.</b>	White: PAB-X50V3L11 Black: PAB-X50V3L12	White: PAC-X50V3L11 Black: PAC-X50V3L12	White: PAT-X0503TA3 Black: PAT-X0503TA4
<b>Bar code</b>	White: 811686004271 Black: 811686004264	White: 4046047102709 Black: 4046047102679	White: 4046047102693 Black: 4046047102686