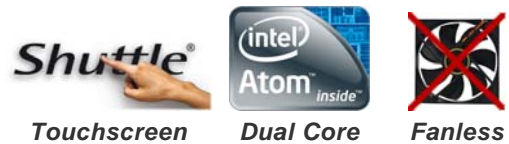


### Fanless All-in-one Touchscreen PC with Windows 7 operating system

The Shuttle X 5030TA is an all-in-one PC boasting a 39.6cm (15.6-inch) LCD touchscreen powered by Intel's dual core Atom processor D2700. This system provides 2GB DDR3 memory, 320 GB hard disk and Windows 7 Home Premium. Equipped with Intel's integrated graphics, it provides generous performance for daily computing with internet and office applications. An external display can be connected via HDMI or D-Sub. A 2.0MP webcam, built-in speakers, card reader, WLAN and other features leave nothing you could ask for. Have any applications start up quickly by just touching the screen for working most swiftly and conveniently.

### Shuttle All-in-One PC **X5030TA Black System**



#### Feature Highlights

<b>All-in-one Design</b>	<ul style="list-style-type: none"> <li>• Fanless cooling</li> <li>• All-in-One PC with resistive touchscreen</li> <li>• Small: 391 x 327 x 42 mm (WHL)</li> <li>• Stand can also be used as a handle</li> <li>• 100mm VESA mount capable</li> <li>• External, fanless power supply (40W)</li> </ul>
<b>Display &amp; Graphics</b>	<ul style="list-style-type: none"> <li>• 39.6cm (15.6") resistive touchscreen with 1366x768 resolution</li> <li>• Integrated graphics (GMA3650, DX9)</li> <li>• HDMI + D-Sub/VGA Video output</li> </ul>
<b>CPU &amp; Chipset</b>	<ul style="list-style-type: none"> <li>• CPU: Intel ATOM D2700 Dual Core 2.13 GHz</li> <li>• Chipset: NM10 (Platform Controller Hub)</li> </ul>
<b>Storage</b>	<ul style="list-style-type: none"> <li>• 2 GB DDR3-1333 SO-DIMM memory</li> <li>• 320 GB SATA hard disk (6.35cm/2.5")</li> </ul>
<b>Operating System</b>	<ul style="list-style-type: none"> <li>• Windows 7 Home Premium 32 Bit</li> </ul>
<b>Connectivity</b>	<ul style="list-style-type: none"> <li>• HDMI, D-Sub, 4x USB, Microphone-in, Line-out</li> <li>• Gigabit LAN, Wireless LAN (n)</li> <li>• Optional: 2x RS232 und 1x LPT (PCL69)</li> </ul>
<b>Built-in</b>	<ul style="list-style-type: none"> <li>• SD Cardreader</li> <li>• 2.0 Megapixel webcam</li> <li>• 2x 2W speakers</li> <li>• Electret Condenser Microphone</li> </ul>
<b>Power Supply</b>	<ul style="list-style-type: none"> <li>• 40W, fanless, Energy Star 5 compliant</li> </ul>
<b>Warranty</b>	<ul style="list-style-type: none"> <li>• 24 months Bring-in Service</li> </ul>



Shuttle order number:  
PAT-X503TA2

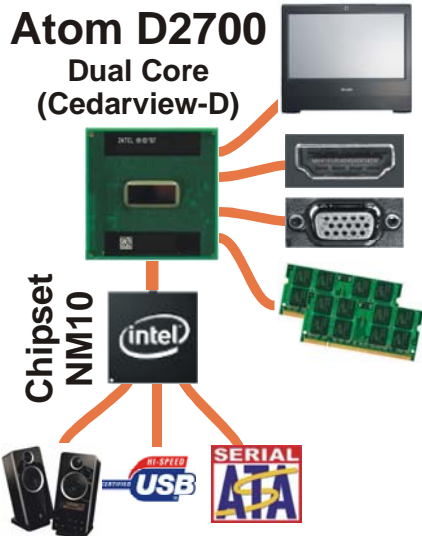
Images for illustration purposes only.

## Shuttle X 5030TA - Product Features



### All applications at your fingertips

The innovative touchscreen technology delivers the simplest operation possible and makes the screen the centre of action. Its high-quality design lets you control the whole range of multimedia - music, movies, video playback and web browsers start by just touching the screen.

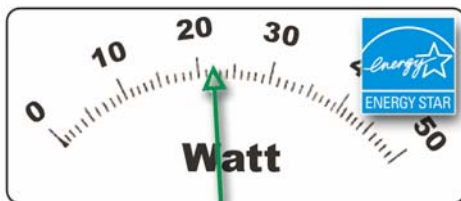


### Atom D2700 processor integrates the graphics core

Shuttle X 5030TA is equipped with Intel's Atom processor D2700, codenamed Cedarview. It brings both the graphics core with HDMI and D-Sub ports and the memory controller on-die which helps reduce the thermal output and memory latency. The CPU is connected to the Southbridge NM10.

### Dual Core. Do more.

Shuttle always uses the dual-core variant of Intel's Atom processors and thus integrates the Atom D2700. This boosts the system performance significantly with particular regards to multi-threaded applications.



### Power saving

The new X 5030TA version is equipped with an Intel Atom D2700 Dual Core processor and eco-friendly ENERGY STAR 5.0 qualified power adapter that consumes about 20~27 Watt only.



### All-in-one PC

Your complete PC system with many components already built in comes in just one single device! This includes the webcam, microphone, display, touchscreen input interface, wireless LAN module and speakers. Helps you save on space, looks simply stylish, reduces cable clutter.

### HDMI and D-Sub/VGA Port

The digital HDMI port or the analog D-Sub/VGA port can be used to connect a secondary external LCD display or a beamer to the PC. The integrated graphics unit supports both clone mode and extended mode.





### Built-In Webcam and Microphone

The built-in 2.0 mega pixel webcam and microphone makes it easy to take pictures or stream live images from across the internet – and connect in real-time with friends, family, and colleagues.



### Slim and chic

Designed as space-savers, this 15.6 inch all-in-one desktop PC only measures 3.6cm in depth.



### Fanless - as quiet as 22dBA

The Shuttle X 5030TA features a cooling system that combines an integrated heatsink with thermal pads - and removes the fan. As an additional benefit, it's not only quiet but also dust-free.



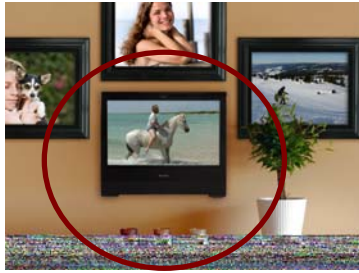
### Carrying handle

Cleverly, the stand can be pulled upwards to serve as a handle making the X 5030TA easy to move and carry around.



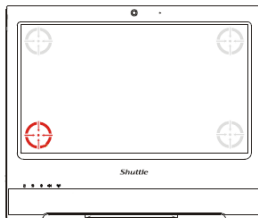
### Kensington Lock

This is a small, metal-reinforced hole as part of an anti-theft system. (The lock and cable are not included.)



### VESA mounting

The stand on the rear can easily be removed to unveil four VESA mounting screw holes that can be used for mounting arms and other mounting devices from a variety of manufacturers.



### 4 Point Touch Screen Calibration

The X 5030TA features a precise touchscreen input device. This can easily be calibrated with the eGalax touch software by just pointing on each corner of the screen using the stylus pen. With this four-point calibration, you can use demanding graphical user interfaces (GUI) that require precise cursor control to properly activate small icons, buttons, scroll bars, etc.



### Optional serial and parallel legacy ports

Legacy ports are widely popular among industrial applications. Thus, the X 5030TA optionally provides one parallel and two serial ports on the back panel (Accessory PLC69).



### Tiny power adapter

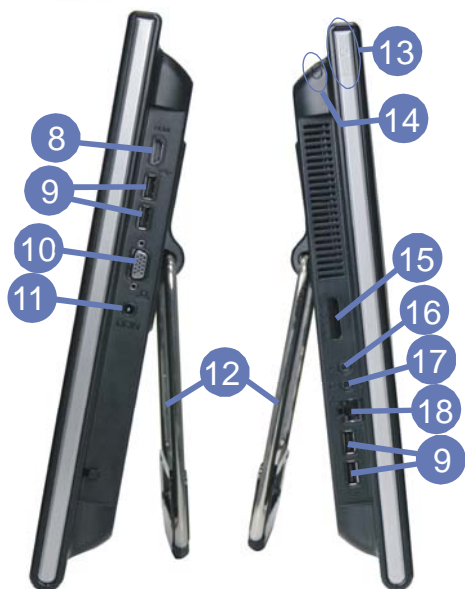
The external 40W power adapter is virtually noiseless and can easily be hidden behind the desk thanks to its tiny dimensions. Dimensions: 89.5 x 37 x 26.5 mm (LWH) = 88ml



Shuttle X 5030TA Overview (Connectors, buttons, etc.)



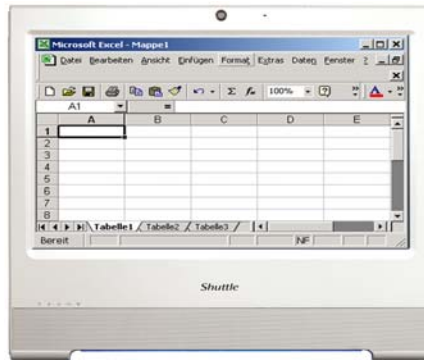
- 1 Touchscreen LCD display
- 2 Webcam
- 3 Microphone
- 4 Power on LED
- 5 Hard disk LED
- 6 Wireless LAN LED (Wifi)
- 7 Stereo speakers
- 8 HDMI video output
- 9 4x USB 2.0 connectors
- 10 D-Sub VGA video output
- 11 DC-input for power adapter
- 12 Stand (handle)
- 13 Power on button
- 14 Stylus pen with holder
- 15 Card reader
- 16 Microphone input
- 17 Audio line out (head phone)
- 18 RJ45 Gigabit LAN connector
- 19 Kensington lock hole
- 20 Vesa mount
- 21 2x COM, 1x Par. Ports (optional accessory PCL69)



Shuttle X 5030TA – Range of Applications



**Entertainment**  
 Music, Movies,  
 Photo gallery, TV\*  
 \*) TV tuner USB stick  
 required



**Work**  
 Banking, Shopping,  
 Office, Stock trading



**Control**  
 Surveillance,  
 Home Automation,  
 Control device



**P.O.S.**  
 Point of sales



**Education**  
 In schools, at home,  
 for children and adults



**Communication**  
 Email, VoIP, Messenger,  
 Blog, Video Conferencing



**Digital Signage**  
 Visual advertising,  
 entertainment, displaying  
 information in public areas

## Shuttle X 5030TA Black – Specifications

<i>Fanless and silent</i>	<p>Passive cooling, no fan noise at all                  Perfect to be used in noise-sensitive environments                  Fanless, dust-free and thus virtually maintenance-free</p>
<i>Chassis</i>	<p>Colour: black, matt / non-glossy                  Dimensions: 391.3 x 327 x 42 mm (WxHxL)                  100mm VESA mount capable                  Mounting hole for Kensington lock                  Weight: 2.93 kg net, 4.2 kg gross</p>
<i>Operating system</i>	<p>Windows 7 Home Premium 32 Bit</p>
<i>Touch-screen</i>	<p>Touchscreen function support fingertip input                  Resistance and single touch technology                  Including stylus pen for the touchscreen</p>
<i>39.6cm (15.6-inch) display</i>	<p>39.6cm/15.6" LCD display, ratio: 16:9 wide screen panel                  Resolution: 1366x768 = 1.05 Megapixels                  Backlight unit: High power LED</p>
<i>Processor</i>	<p>Intel Dual Core Atom processor D2700 (Codename: Cedarview)                  Intel Hyper-Threading technology: 2-threads per core                  32 nm manufacturing process, Micro-FCBGA11 package                  Intel 64 architecture, Core clock: 2.13 GHz                  L2 Cache: 1024kB , TDP: max. 10W                  Supports SSE2, SSE3, SSSE3, Execute Disable Bit                  Integrated North Bridge with controller for memory and graphics                  Passive cooling without any fan</p>
<i>Integrated Graphics</i>	<p>The Graphics Processing Unit (GPU) is integrated into the processor                  Intel GMA 3650, Graphics Base Frequency: 640 MHz, supports DirectX 9                  Maximum shared memory: 8MB pre-allocated                  plus 384MB Video Memory Technology (DVMT)                  Two video outputs: HDMI v1.3 and D-Sub (VGA)                  Supports dual display in clone or extended model</p>
<i>Chipset</i>	<p>Intel® NM10 Express Chipset                  Platform Controller Hub (PCH), Code name: Tiger Point</p>
<i>BIOS</i>	<p>AMI BIOS in a 8Mbit Flash ROM supports PnP, ACPI 2.0                  Supports external USB flash memory card boot up                  Supports Power fail resume / AC power on state / always on / always off                  Supports Wake-on-LAN (WOL) from S3, S3, S5 ACPI states                  Supports Unified Extensible Firmware Interface (UEFI) [1]</p>

<i>Memory</i>	2 GB DDR3-1333 / PC3-10667 SO-DIMM memory module with 204 pins Effective clock frequency: 1066 MHz Maximum memory which can be installed: 4GB (2x 2GB or 1x 4GB)
<i>Hard disk</i>	320 GB Serial ATA hard disk in 6.35cm/2.5" form factor
<i>Card reader</i>	Integrated card reader supports SD, SDHC and SDXC memory flash cards
<i>Webcam</i>	Integrated Webcam module with 2.0 Megapixel (1600x1200) resolution
<i>Microphone Speakers</i>	Front panel with integrated Electret Condenser Microphone and 2x 2W speakers
<i>Integrated Audio</i>	IDT92HD81 Audio Codec with Azalia support Two analog audio connectors (3.5mm): 1) Line out (head phone) 2) microphone input Digital Audio is supported via the HDMI port.
<i>Wired Network</i>	RJ45 connector supports Gigabit LAN at 10/100/1000 Mbit/sec. Network controller JMC 251 Supports Wake-on-LAN (WOL) from S3, S3, S5 ACPI states
<i>Wireless LAN (Wifi)</i>	Supports IEEE 802.11b/g/n, max. 150Mbps up-/downstream Security: WPA/WPA2(-PSK), WEP 64/128bit, IEEE 802.11x/i Half size Mini-PCIe-Card
<i>Connectors</i>	HDMI 1.3 (supports digital video and digital audio) VGA connector (D-Sub 15 pol., analog) 4x USB 2.0 (2x left side, 2x right side) Network (LAN, RJ45) Audio Line-out (head phone) Microphone input DC input for external power adapter optional: 2x COM, 1xLPT (Accessory: PCL69)
<i>LEDs and buttons</i>	Power button Power LED (blue) Hard disk LED (orange) Wireless-LAN / Wifi LED (green)
<i>Power adapter</i>	External 40W AC/DC power adapter (fanless) Energy Star 5 compliant AC Input: 100~240V AC, 50~60Hz DC Output: 19V DC, max. 2.1A Dimensions: 27 x 37 x 90 mm DC Connector: 5.5/2.5mm (outer/inner diameter)



<i>Included Accessories</i>	40W Power Adapter Power cord
<i>Optional Accessories</i>	COM/LPT adapter module PCL69: 1x parallel and 2x serial (RS-232) Carrying bag PF55
<i>Certifications</i>	EMI: CE, FCC, BSMI, C-Tick, CCC Safety: CB, BSMI, ETL Other compliances: RoHS, Eup Lot6
<i>Environment</i>	Operating temperature: 0~35°C Humidity: 10~90%
<i>Conformity</i>	This device is classed as a technical information equipment (ITE) in class B and is intended for use in living room and office. The CE-mark approves the conformity by the EU-guidelines: - EMV-guideline 89/336/EWG electromagnetic tolerance - LVD-guideline 73/23/EWG use of electric devices within certain voltage-limits

### Shuttle X50V3 Series – Product Comparison

Model ->	X50V3 Barebone	X 5030XA	X 5030TA
<b>Type</b>	AIO Barebone	AIO System	AIO System
<b>Operating System</b>	none	none	Windows 7 Home Premium 32 bit
<b>Memory</b>	none	2 GB DDR3-1333	2 GB DDR3-1333
<b>Hard disk</b>	none	320 GB	320 GB
<b>Order No.</b>	White: PAB-X50V311 Black: PAB-X50V312	White: PAH-X503XA1 Black: PAH-X503XB1	White: PAT-X0503TA1 Black: PAT-X0503TA2
<b>Bar code</b>	White: 811686003885 Black: 811686003878	White: 4046047102426 Black: 4046047102433	White: 4046047102372 Black: 4046047102389