

### Fanless 1-litre slim PC with Windows 7 Professional

XS 3500BA V3 is a fully configured slim PC with 2 GB RAM, 320 GB hard disk and Windows 7 Professional operating system. The Atom D2700 processor clocked at 2x 2.13 GHz offers sufficient computing power for a wide range of possible applications and the system barely consumes about 16~20 Watts. This PC comes totally fanless making it perfect to be used in noise-sensitive environments. XS 3500BA V3 features WLAN and card reader, and sports an array of connectors too which include HDMI, D-Sub (VGA), 5x USB, VGA, Gigabit-LAN and 2x audio ports. It's a slim and stylish PC targeted for daily home or office applications, as well as for purely network-based applications in client/server environments.

## XS 3500BA V3

Slim PC



### Feature Highlights

<b>Chassis</b>	<ul style="list-style-type: none"> <li>• Slim 1.5 litre chassis</li> <li>• Dimensions: 25.2 x 16.2 x 3.85 cm</li> <li>• Hole for the Kensington Lock</li> <li>• Optional: VESA75/100 mounting kit PV01</li> </ul>
<b>Operating system</b>	<ul style="list-style-type: none"> <li>• Windows 7 Professional (32 bit)</li> </ul>
<b>CPU</b>	<ul style="list-style-type: none"> <li>• Intel Atom D2700 Dual Core (2.13GHz)</li> </ul>
<b>Chipset</b>	<ul style="list-style-type: none"> <li>• Intel NM10 Express Chipset</li> </ul>
<b>Graphics</b>	<ul style="list-style-type: none"> <li>• Integrated Intel GMA3650 Graphics</li> <li>• Shared Memory: max. 384MB DVMT</li> </ul>
<b>Memory</b>	<ul style="list-style-type: none"> <li>• 2 GB DDR3-1333 SO-DIMM memory</li> </ul>
<b>Storage</b>	<ul style="list-style-type: none"> <li>• 320 GB 2.5" Serial ATA hard disk</li> <li>• With SD card reader</li> </ul>
<b>Connectors and WLAN</b>	<ul style="list-style-type: none"> <li>• HDMI v1.3</li> <li>• D-Sub VGA</li> <li>• 5x USB 2.0 (1x front, 4x rear)</li> <li>• 2x Audio (mic, head phone)</li> <li>• Gigabit-LAN</li> <li>• WLAN 802.11 b/g/n</li> </ul>
<b>Power supply</b>	<ul style="list-style-type: none"> <li>• External 40W fanless power supply</li> </ul>
<b>Applications</b>	<ul style="list-style-type: none"> <li>• Basic and Home-Media</li> </ul>

Images are only for illustration purposes.



Shuttle order no: PET-XS353BA1



©2012 by Shuttle Computer Handels GmbH (Germany). All information subject to change without notice. Pictures for illustration purposes only.

## Shuttle Barebone XS 3500BA V3 - Product Features



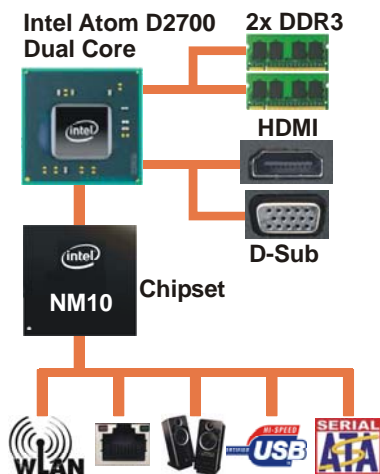
### Slim and stylish

Designed as a space-saver, this sleek 1.5 litre nettop PC only measures 3.8cm in width. It maximizes space whether it is placed upright using its stylish stand or affixed to the back of a display with the optional VESA mounting kit (PV01). Due to its small size and flexible design, this practical nettop offers exceptional functionality and is well-suited for home users, small offices, reception areas, classrooms, libraries, showrooms, call centres, public institutions and more.



### Fanless and quiet

The Shuttle Barebone XS 3500BA V3 comes totally fanless making it perfect to be used in noise-sensitive environments such as living rooms, hospitals, libraries etc. As an additional benefit, fanless cases rarely gather dust on the inside and stay cleaner than others. So it's not only quiet and low in energy use, but also dust-free and virtually maintenance free.

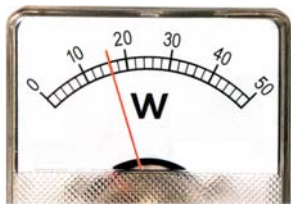


### The Atom processor integrates the graphics controller

Shuttle XS 3500BA V3 is equipped with Intel's Atom D2700 processor (2,13GHz, codenamed Cedarview). It comes with both the memory controller and graphics core on-die which helps to keep heat dissipation and memory latency low. The CPU is connected to the Southbridge NM10, codenamed Tiger Point.

### Dual Core. Do more.

Shuttle always uses the dual-core variant of Intel's Atom processors and thus integrates the Atom D2700. This boosts the system performance significantly with particular regards to multi-threaded applications.



### Highly energy-saving

The XS 3500BA V3 barely consumes, depending on system load, about 16~20 Watts. Running the device 5 days a week for eight hours a day, the annual consumption would amount to less than 40kWh which would mean just 8 Euros on the power bill (20 Euro ct/kWh) - way less than a conventional desktop PC draws.



### Two monitor support with HDMI (DVI) and D-Sub/VGA

The integrated graphics supports multiple display support on up to two separate monitors via HDMI (DVI through optional adapter) and D-Sub/VGA. This improves the capabilities and productivity of the user by allowing them to spread multiple windows over two monitors and view them simultaneously.



### SD card reader

The built-in SD card reader at the front side makes it easy to transfer files from your camera so you can share videos and photos on your XS 3500BA V3 with ease.



### Kensington Lock

This is a small, metal-reinforced hole as part of an anti-theft system. As known from notebooks, this Mini-PC can also be safely locked by tying it to a solid object.

(The lock-and-cable apparatus is not included.)



### Tiny power adapter

The external 40W power adapter is virtually noiseless and can easily be hidden behind the desk thanks to its tiny dimensions.

Dimensions: 89.5 x 37 x 26.5 mm (LWH) = 88ml



### Optional VESA mount (Accessory PV01)

Its optional VESA75/100 wallmount allows it to be installed on to walls or just affixed on the rear side of a monitor which is particularly interesting for the industry segment, company buildings and public institutions.



### Note on operating position

Please make sure the system is always placed upright using either its stand or the optional VESA mount. Ventilation holes must not be blocked to ensure sufficient cooling.

## XS35V3 Series Overview

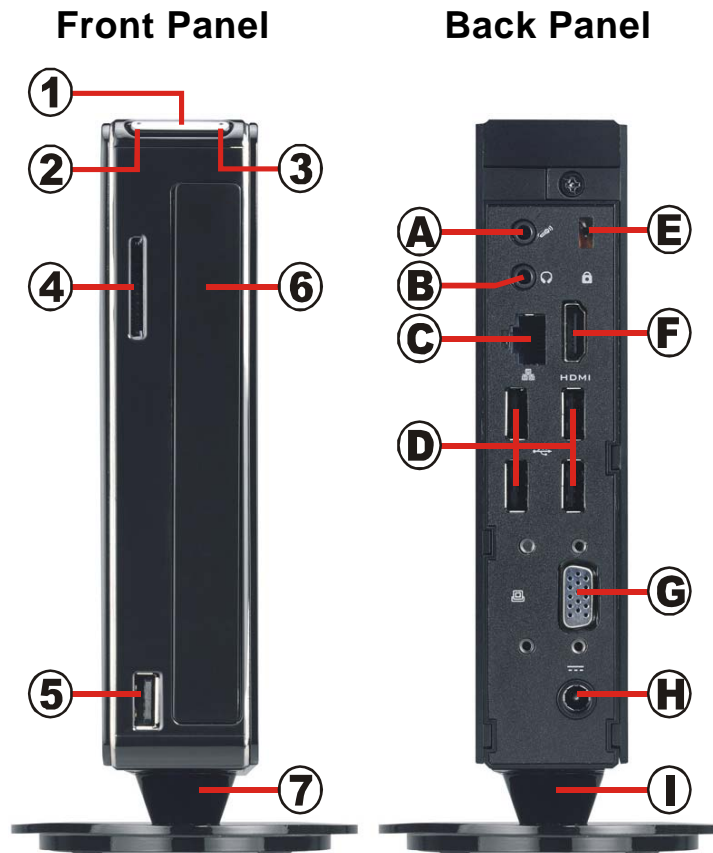
Name	Order number	Graphics	Operating system	Memory	Hard disk	Optical drive	Bar code
XS35 V3	PEB-XS35U301	Intel GMA 3650	-	-	-	-	811686003786
XS35GTA V3	PEB-XS35A301	AMD Rad. HD 7410M	-	-	-	-	811686003717
XS35-703 V3	PEC-XS35U301	Intel GMA 3650	-	2 GB	320 GB	-	4046047102440
XS35GTA-803 V3	PEC-XS35A311	AMD Rad. HD 7410M	-	2 GB	320 GB	-	4046047102457
XS35GTA-804 V3	PEC-XS35A301	AMD Rad. HD 7410M	-	2 GB	500 GB	DVD R/W	4046047102464
XS 3500BA V3	PET-XS353BA1	Intel GMA 3650	Win 7 Professional	2 GB	320 GB	-	4046047102396
XS 3520MA V3	PET-XS353MA2	AMD Rad. HD 7410M	Win 7 Home Prem. 32 bit	2 GB	500 GB	DVD R/W	4046047102402

## Shuttle Barebone XS 3500BA V3 Specifications

<i>Fanless and silent</i>	<p>Passive cooling, no fan noise at all                  Perfect to be used in noise-sensitive environments                  Fanless, dust-free and thus virtually maintenance-free</p>
<i>Chassis</i>	<p>Dimensions without Stand: 25.2 x 16.2 x 3.85 cm (DxHxW)                  Hole for the Kensington Lock at the back panel                  Optional accessory: 75mm and 100mm VESA mounting kit (PV01)</p>
<i>Operation System</i>	<p>Windows 7 Professional (32 bit)</p>
<i>Processor</i>	<p>Intel Dual Core Atom processor D2700 (Codename: Cedarview)                  Intel Hyper-Threading technology: 2-threads per core                  32 nm manufacturing process, Micro-FCBGA11 package                  Intel 64 architecture, Core clock: 2.13 GHz, L2 Cache: 1024kB , TDP: max. 10W                  Supports SSE2, SSE3, SSSE3, Execute Disable Bit                  Integrated North Bridge with controller for memory and graphics</p>
<i>Cooling</i>	<p>Passive, completely fanless cooling through convective heat transfer                  Warning: Please make sure the system is always placed upright using either its stand or the optional VESA mount.                  Ventilation holes must not be blocked to ensure sufficient cooling.</p>
<i>Chipset</i>	<p>Intel® NM10 Express Chipset (south bridge)                  Platform Controller Hub (PCH)                  Code name: Tiger Point</p>
<i>BIOS</i>	<p>AMI BIOS in a 8Mbit Flash ROM supports PnP, ACPI 2.0                  Supports external USB flash memory card boot up                  Supports Power fail resume / AC power on state / always on / always off                  Supports Wake-on-LAN (WOL) from S3, S3, S5 ACPI states                  Supports Unified Extensible Firmware Interface (UEFI)</p>
<i>Memory</i>	<p>2 GB DDR3-1333 SO-DIMM memory (at DDR3-1066 speed)                  Supported maximum capacity: 4 GB</p>
<i>Hard disk</i>	<p>320 GB 2.5" Serial ATA hard disk</p>
<i>Integrated Graphics</i>	<p>The Graphics Processing Unit (GPU) is integrated into the processor                  Intel GMA 3650, Graphics Base Frequency: 640 MHz, Supports DirectX 9                  Maximum shared memory: 8MB pre-allocated plus 384MB Video Memory Technology (DVMT)                  Two video outputs: HDMI v1.3 and D-Sub (VGA)                  Supports dual display in clone or extended mode</p>

<p><i>Integrated Audio</i></p>	<p>Integrated Audio            IDT92HD81 Audio Codec with Azalia support            Two analog audio connectors (3.5mm):            1) Line out (head phone)            2) microphone input            Supports digital 7.1 HD audio via the HDMI port.</p>
<p><i>Card Reader</i></p>	<p>Integrated card reader supports SD, SDHC and SDXC memory flash cards</p>
<p><i>Wired Network</i></p>	<p>RJ45 connector supports Gigabit LAN at 10/100/1000 Mbit/sec.            Network controller JMC 251            Supports Wake-on-LAN (WOL) from S3, S3, S5 ACPI states</p>
<p><i>Wireless Network</i></p>	<p>Supports IEEE 802.11b/g/n, max. 150Mbps up-/downstream            Security: WPA/WPA2(-PSK), WEP 64/128bit, IEEE 802.11x/i            Half size Mini-PCIe-Card</p>
<p><i>Connectors</i></p>	<p>HDMI v1.3 digital video and audio output            D-Sub/ VGA analog video ( 15 pin)            5x USB 2.0 (1x front, 4x rear)            Gigabit network (LAN, RJ45)            Audio Line-out (head phone)            Microphone input            DC input for the external power adapter</p>
<p><i>LEDs and buttons</i></p>	<p>Power button            Power LED (white)            Hard disk LED (blue)</p>
<p><i>Power supply</i></p>	<p>External 40W AC/DC power adapter (fanless), 19V / 2.1A            AC Input: 100~240V AC, 50~60Hz, Automatic voltage adjust            Dimensions: 89.5 x 37 x 26.5 mm (LWH)            DC Connector: 5.5/2.5mm (outer/inner diameter)</p>
<p><i>Optional accessories</i></p>	<ul style="list-style-type: none"> <li>- VESA mount made of metal (PV01)</li> <li>- Adapter for second 2.5" drive instead of optical drive (PHD2)</li> </ul>
<p><i>Environmental spec</i></p>	<p>Operating temperature range: 0~35°C            Relative humidity range: 10~90% (non-condensing)</p>
<p><i>Certification and Compliance</i></p>	<p>EMI: CE, FCC, BSMI, C-Tick, CCC            Safety: CB, BSMI, ETL            Other compliances: RoHS, Eup Lot6            This device is classed as a technical information equipment (ITE) in class B and is intended for use in living room and office. The CE-mark approves the conformity by the EU-guidelines:            - EMV-guideline 89/336/EWG electromagnetic tolerance            - LVD-guideline 73/23/EWG use of electric devices within certain voltage-limits</p>

Shuttle Barebone XS 3500BA V3 – Connectors



- 1 Power button
- 2 Power LED
- 3 Hard disk LED
- 4 SD card reader
- 5 USB connector
- 6 Bay for the optical slimline drive \*)
- 7 Vertical stand

- A Microphone input
- B Head phone output (Line out)
- C Gigabit LAN connector (RJ45)
- D 4x USB connectors
- E Hole for the Kensington-Lock
- F HDMI connector
- G D-Sub/VGA connector
- H Connector for the power adapter
- I Vertical stand

\*) Note: The optical drive is not included.



**Warning:**  
Please make sure the system is always placed upright using either its stand or the optional VESA mount. Ventilation holes must not be blocked to ensure sufficient cooling.



Images are only for illustration purposes.