

### All-in-One PC for POS, POI, Kiosk Applications

The Shuttle XPC all-in-one X5063XA is equipped with Intel's Core i3-7100U ULV processor, 8 GB RAM, 120 GB SSD, but without operation system. The all-new 14 nm Kaby Lake processor architecture helps improve on power consumption and computing power. Thanks to its passive cooling, the system is virtually noiseless, maintenance-free and approved for 24/7 nonstop operation. Particularly suitable for vertical applications is the arrangement of connectors at the bottom and the IP54 compliant front panel which is dust-protected and protected from splashing of water.

#### Feature Highlights

<b>All-in-One Design</b>	<ul style="list-style-type: none"> <li>• XPC all-in-one with touchscreen</li> <li>• Small: 391 x 327 x 42 mm (WHL)</li> <li>• Stand can also be used as a handle</li> <li>• 100 mm VESA mount capable</li> <li>• IP54 compliant front panel</li> <li>• Approved for 24/7 nonstop operation</li> </ul>
<b>Display &amp; Graphics</b>	<ul style="list-style-type: none"> <li>• 39.6 cm (15.6") resistive touchscreen with a 1366 x 768 resolution</li> <li>• Integrated Intel HD 610 graphics</li> <li>• HDMI 1.4 + D-Sub/VGA Video output</li> </ul>
<b>CPU &amp; Cooling</b>	<ul style="list-style-type: none"> <li>• Intel Core i3-7100U, 2.4 GHz, 15 W TDP, Dual Core, 4 Threads, 3 MB Cache</li> <li>• Fanless heatpipe cooling system</li> </ul>
<b>Storage</b>	<ul style="list-style-type: none"> <li>• 8 GB DDR4-2133 SO-DIMM</li> <li>• 120 GB NVMe SSD in M.2 form factor</li> <li>• Supports one 2.5" drive with SATA interface</li> <li>• Supports internal USB stick (USB 2.0, type A)</li> </ul>
<b>Operating System</b>	<ul style="list-style-type: none"> <li>• Operating system is not included</li> <li>• Supports Windows 10 (64-bit) &amp; Linux (64-bit)</li> </ul>
<b>Connectivity</b>	<ul style="list-style-type: none"> <li>• HDMI 1.4, D-Sub/VGA</li> <li>• 2x USB 3.0, 4x USB 2.0, internal: 2x USB 2.0</li> <li>• Microphone input, headphones output</li> <li>• Gigabit LAN, Wireless LAN 802.11n</li> <li>• Optional: 4x RS232, 1x LPT, 1x RJ11</li> </ul>
<b>Built-in</b>	<ul style="list-style-type: none"> <li>• SD card reader</li> <li>• 2.0 Megapixel HD webcam</li> <li>• 2x 2 W speakers</li> <li>• Electret Condenser Microphone</li> </ul>
<b>Power Supply</b>	<ul style="list-style-type: none"> <li>• External fanless power adapter, 65 W</li> </ul>
<b>Warranty</b>	<ul style="list-style-type: none"> <li>• 24 months Bring-in Service</li> </ul>

### XPC all-in-one System X5063XA Black



Images for illustration purposes only.



15.6"  
Touchscreen



Front protected:  
dust & water



Fanless  
cooling



2x USB 3.0  
4x USB 2.0



Wireless and  
Wired Network



Supports  
Windows 10 &  
Linux (64-bit)



4 046047 103331

## Shuttle XPC all-in-one X5063XA – Overview



- |                           |                                   |  |
|---------------------------|-----------------------------------|--|
| 1 Touchscreen LCD display | 10 SD Card Reader                 | 19 Optional: 4x COM, LPT, RJ11 (POS01) |
| 2 Webcam                  | 11 2x USB 2.0                     | 20 Perforation for TV antenna (9 mm)   |
| 3 Microphone              | 12 Clear CMOS Button              | 21 DC-input for Power Adapter          |
| 4 Power on LED            | 13 Stand (handle)                 | 22 2x USB 2.0                          |
| 5 Hard disk LED           | 14 Cooling Vents                  | 23 RJ45 Gigabit LAN                    |
| 6 Stereo speakers         | 15 Kensington lock                | 24 2x USB 3.0                          |
| 7 Power-on button         | 16 D-Sub/VGA Video Output         | 25 HDMI Video Output                   |
| 8 Stylus with holder      | 17 Vesa Mount 100x100mm           | 26 Audio Line-out (headphones)         |
| 9 Power Button            | 18 Optional: 2x COM + LTP (PCL71) | 27 Microphone Input                    |

## Shuttle XPC all-in-one X5063XA – Special Features



### All applications at your fingertips

The innovative touchscreen technology delivers the simplest operation possible and makes the screen the centre of action. Its high-quality design lets you control the whole range of multimedia - music, movies, video playback and web browsers start by just touching the screen.



### All-in-One PC

Your complete PC system with many components already built in comes in just one single device! This includes the webcam, microphone, mainboard, display, touchscreen input interface, wireless LAN module and speakers. It helps you save space, looks simply stylish and reduces cable clutter.



### Fanless and quiet

The Shuttle XPC all-in-one X5063XA uses a passive thermal module with heatpipes to lead heat out of the case quickly and evenly. The unique fanless design makes it perfect to be used in noise-sensitive environments such as living rooms, hospitals, libraries etc. As an additional benefit, fanless cases rarely gather dust on the inside and stay cleaner than others. So it's not only quiet and low in energy use, but also virtually maintenance-free.



### Connects to two external Full HD displays

The Shuttle XPC all-in-one X5063XA features two video outputs: One analog D-Sub/VGA connector and one HDMI connector. Two external Full HD displays can be connected in extended mode. Now add the built-in display of the X5063XA and there are three displays showing different content.



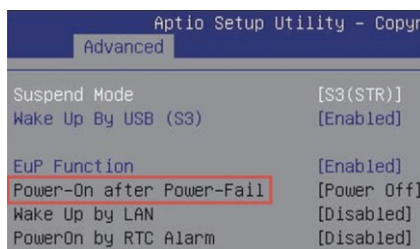
### Protection Class IP54

The front panel of the Shuttle XPC all-in-one X5063XA is dust-protected and protected from splashing of water according to IP protection class 54. Consequently, this All-in-One PC can be used for those indoor applications, where the touchscreen may be exposed to humidity and occasional splashing of water. This is particularly welcome in restaurants, laboratories, production or other places.



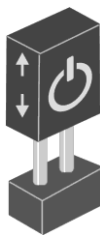
### Optimised Cable Management

Most of the connectors are now located at the back panel facing down. This leads to an effective cable management making for a clean, tidy appearance on the desk. On the left side sit those connectors which need to be accessed from the front: the card reader and two USB ports.



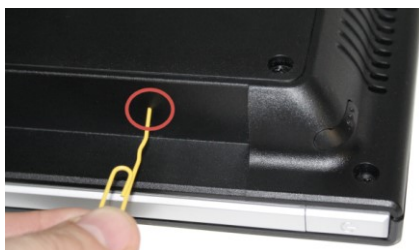
### Power on after Power fail

The BIOS setup provides a "Power-On after Power Fail" function that can be found under "Power Management Configuration" where the PC's behaviour after power failure can be determined.



### Always Power-on Jumper

The Shuttle XPC all-in-one X5063XA also comes with a hardware-based solution. By removing Jumper 7, the system will start unconditionally once power is applied.



### Hidden Power Button

The power button can be deactivated to prevent unauthorized use. Still it can be used with a straightened paper clip as shown on the left.





### VESA mount

The stand on the rear can easily be removed to unveil four VESA mounting screw holes that can be used for mounting arms and other mounting devices from a variety of manufacturers.



### Stylus for the touchscreen

The Shuttle XPC all-in-one X5063XA is equipped with a 5-wire resistive touchscreen for simple operation by finger (even with gloves) or stylus. The stylus comes supplied as standard and sits in an opening located at the top of the chassis. Using the stylus results in a smoother and more precise input than just using a finger.



### Kensington Lock

This is a small, metal-reinforced hole as part of an anti-theft system. (Lock and cable not included.)



### Carrying handle

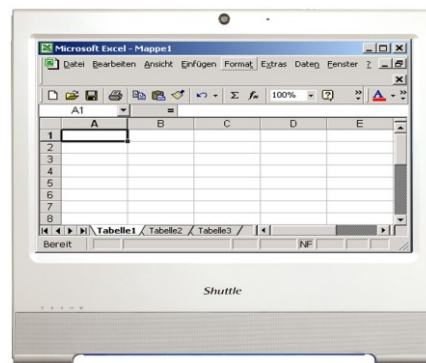
The practical stand can be pulled upwards to also serve as a handle making the Shuttle XPC all-in-one X5063XA easy to carry. Clever!

## Shuttle XPC all-in-one X5063XA – Range of Applications



### Digital Signage

Visual advertising,  
entertainment, displaying  
information in public areas



### Office Work

Word and spreadsheet  
processing, email, internet



### P.O.S.

Point of sales



### Control

Surveillance,  
Home Automation,  
Control device



### Communication

Email, VoIP, Messenger,  
Blog, Video Conferencing



### Instore Radio

Playing advertising  
and music

## Shuttle XPC all-in-one X5063XA – Specifications

<i>Fanless and silent</i>	<p>Passive heatpipe cooling, no fan noise at all</p> <p>Perfect to be used in noise-sensitive environments</p> <p>Fanless, dust-free and thus virtually maintenance-free</p>
<i>IP54 protected</i>	<p>The front panel is dust-protected and protected from splashing of water according to protection class IP54.</p>
<i>Chassis</i>	<p>Colour: black</p> <p>Dimensions: 391 x 327 x 42 mm (W x H x D)</p> <p>100mm VESA mount capable</p> <p>Mounting hole for Kensington lock</p> <p>Weight: 3.6 kg net, 4.8 kg gross</p>
<i>Operation System</i>	<p>This system comes without operating system.</p> <p>It is compatible with:</p> <ul style="list-style-type: none"> <li>- Windows 10 (64-bit)</li> <li>- Linux (64-bit)</li> </ul>
<i>Touchscreen</i>	<p>Touchscreen function supports fingertip input</p> <p>Resistive 5-wire single-touch technology</p> <p>Stylus for the touchscreen included</p>
<i>15.6" Display</i>	<p>39.6 cm / 15.6" LCD display, ratio: 16:9 widescreen panel</p> <p>Resolution: 1366 x 768 = 1.05 Megapixel</p> <p>Backlight unit: High power LED, Luminance: 220 cd/sqm</p> <p>Glass thickness: 0.5 mm</p>
<i>Processor</i>	<p>Model: Intel Core i3-7100U (ULV)</p> <p>System-on-a-chip architecture (SoC): no chipset required</p> <p>BGA1356 package - directly soldered onto the mainboard</p> <p>Code name: Kaby Lake-U (7th Generation Intel Core)</p> <p>Cores / Threads: 2 / 4</p> <p>Clock rate: 2.4 GHz</p> <p>L1/L2/L3 Cache: 128 kB / 512 kB / 3072 kB</p> <p>Memory controller: DDR4-2133 Dual Channel (1.2 V)</p> <p>TDP wattage: 15 W maximum</p> <p>Manufacturing process: 14 nm</p> <p>Maximum Tjunction Temperature: 100 °C</p> <p>Supports Hyper-Threading (HT), 64-bit, VT-x (EPT), VT-d, Enhanced SpeedStep, NX bit, AES-NI, SSE 4.1/4.2</p> <p>Integrated graphics engine</p>

<i>Integrated Graphics</i>	<p>Intel HD Graphics 620</p> <p>GPU clock frequency: 300~1000 MHz</p> <p>Execution Units (EUs): 24</p> <p>Supports DirectX 12</p> <p>Supports full H264, H265 8/10 bit, VP8/9, VC-1, AVC hardware decoding</p> <p>Supports Quick Sync Video and Clear Video HD technology</p>
<i>Up to three displays</i>	<p>Two video ports support two additional independent screens:</p> <p>1) HDMI 1.4 supports 1920 x 1080 @ 60 Hz or 3840 x 2160 @ 30 Hz</p> <p>2) VGA / D-Sub analog video supports 1920 x 1080 @ 60 Hz</p> <p>Special conditions for operation in Multi-Monitoring mode:</p> <p>1) Clone mode: all displays show the same content at 1366 x 768 resolution</p> <p>2) Extended mode: all displays show different content</p>
<i>BIOS</i>	<p>AMI BIOS in 8 MByte EEPROM with SPI interface</p> <p>Supports Power fail resume / always on</p> <p>Supports Wake-on-LAN (WOL) from S3, S4, S5 ACPI states</p> <p>Supports hardware monitoring and watch dog functionality</p> <p>Supports Firmware TPM v2.0 functionality</p>
<i>Memory</i>	<p>8 GB DDR4-2133 (PC4-17000) SDRAM at 1.2 V</p> <p>SO-DIMM memory with 260 pins</p> <p>Supports a maximum of 16 GB per DIMM, maximum total size: 32 GB</p>
<i>2.5" Storage Drive</i>	<p>Supports one SATA hard disk or one SATA SSD drive in 6.35 cm / 2.5" format</p> <p>The SATA 3.0 interface supports up to 600MB/s data transfer speed (6 Gbit/s)</p> <p>Supports one drive with up to 12.5 mm in height</p>
<i>M.2 SSD Storage</i>	<p>120 GB NVMe SSD storage drive in M.2 form factor</p>
<i>Card Reader</i>	<p>Integrated card reader supports SD, SDHC and SDXC memory flash cards</p>
<i>Webcam</i>	<p>Integrated 2.0 Megapixel (1600 x 1200) HD webcam</p>
<i>Microphone Speakers</i>	<p>Front panel with integrated Electret Condenser Microphone and 2x 2W speakers</p>
<i>Audio</i>	<p>Realtek ALC269 Audio Codec</p> <p>Two analog audio connectors (3.5 mm) on the bottom side:</p> <p>1) Line-out (headphones)</p> <p>2) Microphone input</p> <p>Digital Audio is supported via HDMI.</p>
<i>Wired Network</i>	<p>Intel i211 Ethernet Controller with MAC, PHY and PCIe interface</p> <p>Supports 10 / 100 / 1.000 MBit/s operation</p> <p>Supports WAKE ON LAN (WOL) from S3, S4 modes</p> <p>Supports network boot by Preboot eXecution Environment (PXE)</p>



Wireless Network	WLAN chip: Realtek 8188EE Supports IEEE 802.11b/g/n for 2.4 GHz band Speed: max. 150Mbps up-/downstream Security: WPA/WPA2, WEP M.2-2230AE card with internal antenna
Front LEDs	Power LED (blue) Hard disk LED (orange)
Connectors left side	Power button 2x USB 2.0 SD card reader Hole with power button Hole with Clear CMOS button
Connectors bottom side	HDMI 1.4 (supports digital video and digital audio) 2x USB 3.0 2x USB 2.0 Gigabit Network (LAN, RJ45) Audio Line-out / headphones (3.5 mm jack) Microphone input (3.5 mm jack) DC input for external power adapter (5.5 / 2.5 mm) Perforation for optional TV/3G antenna (diameter: 9 mm) Optional: 2x COM/serial (RJ45), DIO (RJ11) for cash drawer (accessory POS01)
Connectors rear side	VGA connector (D-Sub 15 pol., analog video) Optional: 2x COM/serial (D-Sub), 1x LPT/parallel (accessory: PCL71 or POS01)
Connectors onboard	Internal USB 2.0 type A connector for a USB stick Serial ATA (6 Gbps) Serial ATA power connector 3x USB 2.0 header (all occupied) eDP connector (Embedded DisplayPort) - occupied by the display Connector for optional COM/LPT adapter POS01 or PCL71
Power Adapter	External 65 W power adapter (fanless) Input: 100~240 V AC, 50/60 Hz, max. 1.6 A Output: 19 V DC, max. 3.42 A, max. 65 W DC Connector: 5.5 / 2.5 mm (outer/inner diameter) Note: The X5063XA also supports a 60 W power adapter with 12 V DC output voltage
DC Input	DC Input Connector: 5.5 / 2.5 mm (outer/inner diameter) The DC-input of the computer supports an external power source with either 12V±5% or 19V±5%.
Included Accessories	Quick Guide Driver DVD External Power Adapter (65W / 19V) with Power cord

<p><i>Optional Accessories</i></p>	<p><u>PCL71</u>: COM / LPT adapter:</p> <ul style="list-style-type: none"> <li>- 1x Parallel (25p D-Sub)</li> <li>- 2x Serial RS232 (9p D-Sub) supports 0 / 5 / 12V</li> </ul> <p><u>POS01</u>: COM / LPT adapter:</p> <ul style="list-style-type: none"> <li>- 1x Parallel (25p D-Sub)</li> <li>- 2x Serial RS232 (9p D-Sub) supports 0 / 5 / 12V</li> <li>- 2x Serial RS232 (8p RJ45)</li> <li>- 1x DIO/RJ11 connector for cash drawer supports 12 / 24V</li> </ul> <p><u>PF55</u>: Carrying bag</p>
<p><i>Environmental criteria</i></p>	<p>Operating temperature: 0~40 °C Humidity: 10~90 %</p>
<p><i>Certification and Compliance</i></p>	<p>EMI: CE, FCC, BSMI Safety: CB, BSMI, ETL Other compliances: RoHS, ErP Lot6, Energy Star v5.0</p>
<p><i>Conformity</i></p>	<p>This device is classed as a technical information equipment (ITE) in class B and is intended for use in living room and office. The CE-mark approves the conformity by the EU directives:</p> <ul style="list-style-type: none"> <li>(1) 2014/30/EU relating to electromagnetic compatibility (EMC),</li> <li>(2) 2014/35/EU relating to Electrical Equipment designed for use within certain voltage limits (LVD),</li> <li>(3) 2009/125/EC relating to ecodesign requirements for energy-related products (ErP),</li> <li>(4) 2014/53/EU Radio Equipment Directive (RED)</li> </ul>

## Shuttle XPC all-in-one X50V6 Series – Product Comparison

## Based on X50V6 (Celeron 3865U processor):

Model	X50V6	X5060XA	POS X506	X5060TA	X5060PA
Type	Barebone	System without Operation System	System without Operation System with COM ports	System with Windows 10 Home	System with Windows 10 IoT
EAN Black	887993000701	4046047103249	4046047103263	4046047103232	4046047103317
EAN White	887993001227	4046047103256	4046047103270	not available	not available
RAM	---	4 GB DDR4	4 GB DDR4	4 GB DDR4	4 GB DDR4
HDD/SSD	---	500 GB HDD	120 GB SSD	500 GB HDD	120 GB M.2 NVMe
COM ports	---	---	Ja (PCL71)	---	---
Operation System	---	---	---	Windows 10 Home (64-bit)	Windows 10 IoT Enterprise Value

## Based on X50V6U3 (Core i3-7100U processor):

Model	X50V6U3	X5063XA	X5063TA
Type	Barebone	System without Operation System	System with Windows 10 Pro
EAN Black	887993001074	4046047103331	4046047103324
EAN White	887993001098	not available	not available
RAM	---	8 GB DDR4	8 GB DDR4
HDD/SSD	---	120 GB M.2 NVMe	120 GB M.2 NVMe
COM ports	---	---	---
Operation System	---	---	Windows 10 Pro (64-bit)

