

### Elegant appearance – just 3.6 mm thin with Linux operating system

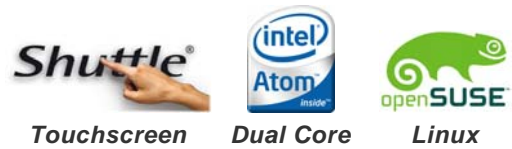
The X500V All-in-One PC is based on the Linux operating system, energy-saving technologies and an innovative control concept. The latest version of openSUSE Linux, Intel Atom 330 dual-core processor (2x 1.6 Ghz) and a 39.6 cm (15.6") touchscreen characterise this gem which is just 3.6 cm thin. Forget about keyboard and mouse – the X500V can be controlled with finger or stylus. A webcam, WLAN, microphone and speakers are pre-installed. Expansion with additional programme packages is possible with 1-click installation from the openSUSE website. A 24-month bring-in service is also available in a warranty case.

### Feature Highlights

<i>All-in-one design</i>	<ul style="list-style-type: none"> <li>• Full featured stylish PC platform</li> <li>• Small: 391 x 327 x 36 mm (WHL)</li> <li>• Stand can also be used as a handle</li> <li>• External, fanless power supply (65W)</li> </ul>
CPU & Chipset	<ul style="list-style-type: none"> <li>• CPU: Intel ATOM 330 Dual Core</li> <li>• Chipset: Intel 945GC + ICH7</li> </ul>
Storage	<ul style="list-style-type: none"> <li>• 1 or 2 GB DDR2 SO-DIMM memory</li> <li>• 160~500 GB 6,35cm/2,5" SATA hard disk</li> </ul>
Operating system	<ul style="list-style-type: none"> <li>• OpenSUSE Linux, powered by Novell</li> </ul>
Display & Graphics	<ul style="list-style-type: none"> <li>• 39.6cm / 15.6" touchscreen (1366x768)</li> <li>• Integrated GMA950 graphics, 224MB UMA</li> <li>• VGA Video output (clone mode)</li> </ul>
Connectivity	<ul style="list-style-type: none"> <li>• 5x USB</li> <li>• Audio: Mic, Line-in/out or 5.1 Line-out</li> <li>• Gigabit LAN, Wireless LAN (draft-n)</li> </ul>
Built-in	<ul style="list-style-type: none"> <li>• SD card reader</li> <li>• 1.3 Megapixel webcam</li> <li>• 2x 2W speakers</li> <li>• Microphone</li> <li>• 100mm VESA mount capable</li> </ul>
Application	<ul style="list-style-type: none"> <li>• Basic, Home Media</li> </ul>
Warranty	<ul style="list-style-type: none"> <li>• 24 months Bring-in-Service</li> </ul>

Product name: Shuttle All-in-One PC X500V Black  
Shuttle order number: PAM-X500V01

### Shuttle All-in-One PC **X500V Black**



Images for illustration purposes only.

## Shuttle X500V Black - Special Product Features



### All applications at your fingertips

The innovative touchscreen technology delivers the simplest operation possible and makes the screen the centre of action. Its high-quality design lets you control the whole range of multimedia - music, movies, video playback and web browsers start by just touching the screen.



### Dual Core. Do more.

The vast majority of the existing netbooks and all-in-one PCs with an Intel Atom CPU use the original Single Core version. In contrast to this, Shuttle's all-in-one PC X500V stands out from the crowd with its embedded Intel Atom 330 Dual Core processor, which is boosting the productivity of the PC system, particularly with regards to multithreaded applications.



### All-in-one PC

Your complete PC system with many components already built in comes in just one single device! This includes the webcam, microphone, mainboard, display, touchscreen input interface, Wireless LAN module and speakers. Saves you more space, looks simply stylish, less wiring.



### Slim and chic

Designed as space-savers, this 15.6 inch all-in-one desktop PC only measures 3.6cm in depth.



### Fanless power supply

External, fanless 65W power supply for whisper quiet operation



### Kensington Lock

This is a small, metal-reinforced hole as part of an anti-theft system. (The lock-and-cable apparatus is not included.)



### VGA Port

This VGA port can be used to connect a secondary external LCD display or beamer to the PC. It supports the clone mode operation.



### Carrying handle

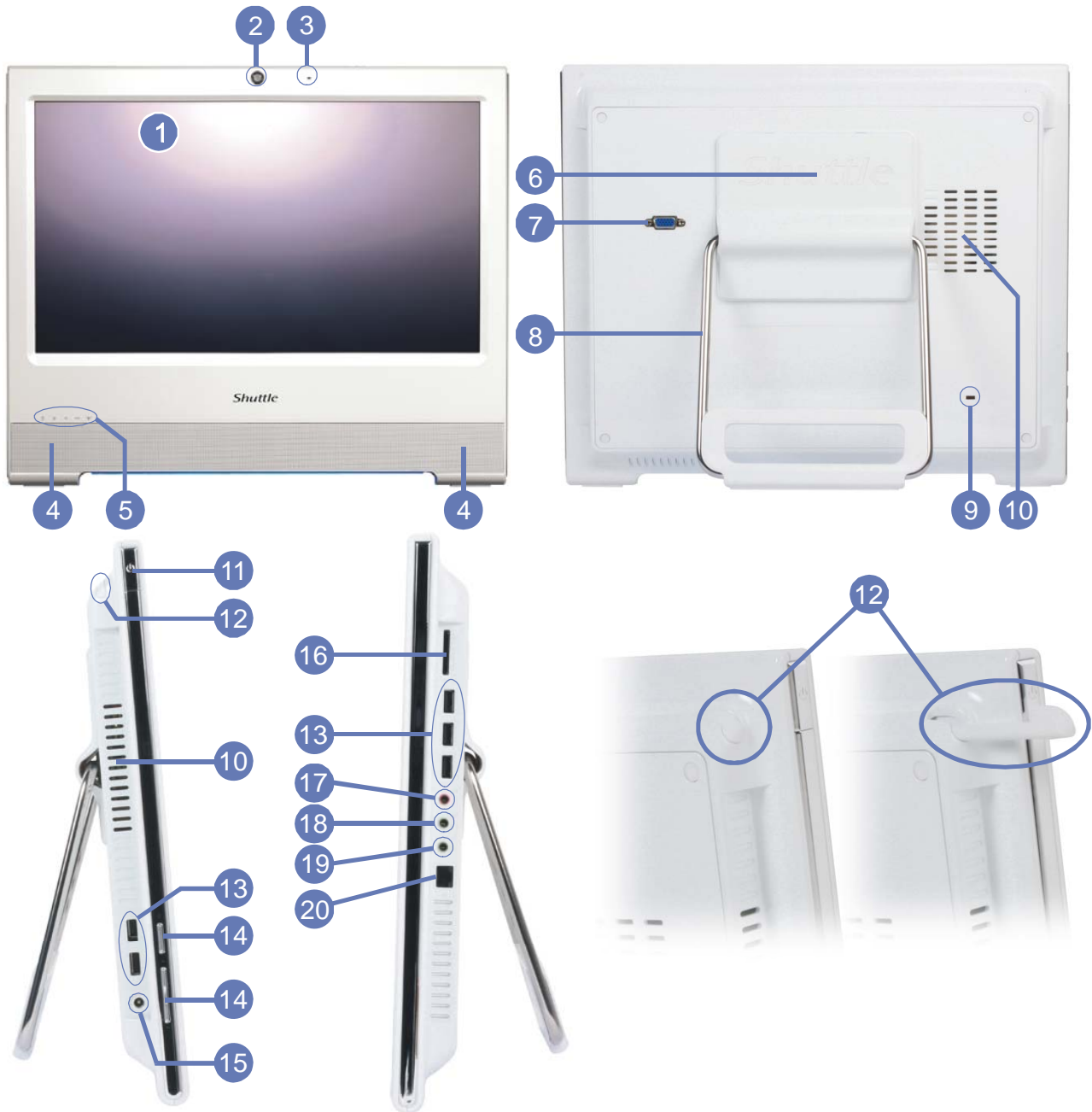
Cleverly, the X500V's stand can be pulled up to serve as a handle - easy to move and light to carry with one hand.



### VESA mounting

The stand on the rear can easily be removed unveiling four VESA mounting screw holes that can be used for mounting arms and other mounting devices from a variety of manufacturers.

Shuttle X500V Black Overview (Connectors, buttons, etc.)



- 1 Touchscreen LCD display
- 2 Webcam
- 3 Microphone
- 4 Speakers
- 5 LEDs
- 6 VESA mount
- 7 VGA port

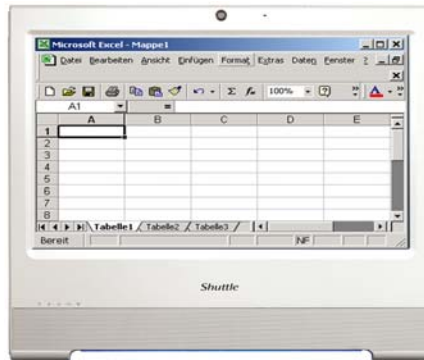
- 8 Stand (or handle)
- 9 Kensington lock
- 10 Vent holes
- 11 Power on button
- 12 Stylus pen with holder
- 13 USB connectors (5x)
- 14 LCD buttons

- 15 DC-input for power supply
- 16 Card-reader
- 17 Audio Line-in
- 18 Audio Line-out
- 19 Microphone input
- 20 Gigabit LAN port (RJ45)

Shuttle X500V – Range of Applications



**Entertainment**  
 Music, Movies,  
 Photo gallery, TV\*  
 \*) TV tuner USB stick  
 required



**Work**  
 Banking, Shopping,  
 Office, Stock trading



**Control**  
 Surveillance,  
 Home Automation,  
 Control device



**P.O.S.**  
 Point of sales



**Education**  
 In schools, at home,  
 for children and adults



**Communication**  
 Email, VoIP, Messenger,  
 Blog, Video Conferencing



**Digital Signage**  
 Visual advertising,  
 entertainment, displaying  
 information in public areas

## Shuttle All-in-One PC X500V Black Specifications

<b>Chassis</b>	<p>Color: Black                  Dimensions: 391.3 x 327 x 36 mm (WxHxL)                  100mm VESA mount capable                  Mounting hole for Kensington lock</p>
<b>Operating system</b>	<p>OpenSUSE Linux, powered by Novell</p>
<b>Touch-screen</b>	<p>Touchscreen function support fingertip input                  Resistance and single touch technology                  Including stylus pen for the touchscreen</p>
<b>39.6cm / 15.6"-inch display</b>	<p>39.6cm/15.6" LCD display, ratio: 16:9                  Resolution: 1366x768 = 1.05 Megapixels                  Adjustable backlight unit: High power LED                  OSD (On Screen Display)</p>
<b>Processor</b>	<p>Intel Atom 330 Dual Core processor (Codename: Diamondville)                  2x 1.6 GHz core clock, 533 MHz FSB                  2x 512kB L2 cache                  Supports Hyper-Threading (4 threads total)                  TDP = 8 watts</p>
<b>Memory</b>	<p>1 or 2 GB DDR2-667/800 SO-DIMM memory (200 pin)                  Two DIMM sockets, max. 1GB per module</p>
<b>Chipset</b>	<p>Intel® 945GC+ICH7 Express Chipset</p>
<b>Hard disk drives</b>	<p>160~500 GB Serial ATA II hard disk, 6.35cm/2.5"-format, 5400 rpm</p>
<b>Card reader</b>	<p>Integrated card reader supports SD and SDHC memory flash cards</p>
<b>Webcam</b>	<p>Integrated Webcam module with 1.3 Megapixel resolution</p>
<b>Integrated graphics</b>	<p>Intel Graphics Media Accelerator 950 (GMA950)                  with PCI-E x1 improved bandwidth, features 333MHz graphics core                  DX8/DX9 support and enhanced 3D performance                  Dynamic Video Memory Technology (DVMT) 3.0                  Shared Memory max. 224MB                  Video out: Analog 15pin D-Sub VGA                  Supports Dual Display operation in clone mode</p>

© 2009 by Shuttle Computer Handels GmbH (Germany). All information subject to change without prior notice. Pictures for illustration purposes only.

<b>5.1 audio Microphone Speakers</b>	<p>Audio Realtek® ALC 662 5.1-channel High-Definition Audio</p> <p>Three analog audio connectors (3.5mm):</p> <ol style="list-style-type: none"> <li>1) Front Line out (head phone)</li> <li>2) Rear Surround line-out (shared with microphone input)</li> <li>3) Center line-out (shared with Line in)</li> </ol> <p>Front panel with integrated microphone and 2x 2W speakers</p>
<b>Gigabit LAN</b>	<p>Realtek 8111C Ethernet network controller (Gigabit)</p> <p>Supports 100 / 1.000 MBit/s operation</p> <p>Supports Wake-on-LAN (WOL)</p>
<b>Wireless LAN (Wifi)</b>	<p>Supports 802.11 b/g and draft-n</p>
<b>Connectors</b>	<p>VGA connector (D-Sub 15 pol., analog)</p> <p>5x USB 2.0</p> <p>GigaBit LAN (RJ45)</p> <p>Audio 5.1 channel (shared with microphone, line-in, line-out)</p>
<b>LED's and buttons</b>	<p>Hard disk LED</p> <p>Voice volume LED</p> <p>Power button</p> <p>On Screen Display button</p> <p>1x panel backlight brightness setting</p>
<b>Power supply</b>	<p>External 65 power adapter (fanless)</p> <p>Input: 100~240V AC, 50~60Hz, Output: 19V DC</p> <p>Outline Dimension: 108x46x30mm, Color: Black</p>
<b>Accessories</b>	<p>User guide</p> <p>System manual</p> <p>Driver CDROM</p> <p>Recovery CDROM</p> <p>Stylus pen for the touchscreen</p> <p>Power adapter</p>
<b>Certifi- cations</b>	<p>Safety certifications: UL TÜV, CB, BSMI</p> <p>EMI certifications: CE, FCC, BSMI, C-tick</p> <p>Other certifications: Energy Star 4.0</p>
<b>Environment</b>	<p>Operating temperature: 0~35°C</p> <p>Humidity: 0~60%</p>
<b>Weight</b>	<p>Net weight: 3.6 kg</p>
<b>Warranty</b>	<p>24 months Bring-in-Service</p>

Shuttle All-in-one-PC X50-Series – Product Overview



All versions are available in **Black and White** color.

		Operating system	Memory	Hard disk	Barcode
Online Configurator (BTO)	X 5000T	Windows XP Professional Windows Vista Home Basic Windows Vista Business Windows 7	1 or 2 GB	160~500GB	–
	X500V	openSUSE Linux	1 or 2 GB	160~500GB	–
	X50XA	–	1 or 2 GB	160~500GB	–
Fixed configuration	X 5000TA	Windows Vista Home Basic	2 GB	160 GB	White: 4046047101894 Black: 4046047101931
	X 5000TB	Windows 7	2 GB	160 GB	White: 4046047101986 Black: 4046047101993
	X500VA	openSUSE Linux	2 GB	160 GB	White: 4046047101948 Black: 4046047101955
	X50XB	–	2 GB	160 GB	White: 4046047101917 Black: 4046047101924
Barebone	X50 Barebone	–	–	–	White: 811686007593 Black: 811686002925

Last update: October 2009