

### Shuttle all-in-one touchscreen PC

The Shuttle X 5000TA Black is an all-in-one PC boasting a 39.6cm / 15.6-inch touchscreen LCD powered by Intel's Atom 330 dual-core processor. Intended for use in the home environment, the X 5000TA features 2GB of memory, a 160GB hard disk drive and runs Windows Vista Home Basic. Equipped with Intel's GMA950 onboard graphics, it provides generous performance for daily computing with internet and office applications. A webcam, built-in speakers, card reader, WLAN and other features leave nothing you could ask for. Have any applications start up quickly by just touching the screen for working most swiftly and conveniently.

#### Feature Highlight

<i>All-in-one design</i>	<ul style="list-style-type: none"> <li>Full featured stylish PC platform</li> <li>Small: 391 x 327 x 36 mm (WHL)</li> <li>Stand can also be used as a handle</li> <li>External, fanless power supply (65W)</li> </ul>
CPU & Chipset	<ul style="list-style-type: none"> <li>CPU: Intel ATOM 330 Dual Core</li> <li>Chipset: Intel 945GC + ICH7</li> </ul>
Storage	<ul style="list-style-type: none"> <li>2 GB DDR2 SO-DIMM memory</li> <li>160 GB 6.35cm/2.5" SATA hard disk</li> </ul>
Operating system	<ul style="list-style-type: none"> <li>Windows Vista Home Basic</li> </ul>
Display & Graphics	<ul style="list-style-type: none"> <li>39.6cm/15.6" touchscreen (1366x768)</li> <li>Integrated GMA950 graphics, 224MB UMA</li> <li>VGA Video output (clone mode)</li> </ul>
Connectivity	<ul style="list-style-type: none"> <li>5x USB</li> <li>Audio: Mic, Line-in/out or 5.1 Line-out</li> <li>Gigabit LAN, Wireless LAN (draft-n)</li> </ul>
Built-in	<ul style="list-style-type: none"> <li>SD card reader</li> <li>1.3 Megapixel webcam</li> <li>2x 2W speakers</li> <li>Microphone</li> <li>100mm VESA mount capable</li> </ul>
Application	<ul style="list-style-type: none"> <li>Basic, Home Media</li> </ul>
Warranty	<ul style="list-style-type: none"> <li>24 months Pick-up and Return Service</li> </ul>



Product name: Shuttle All-in-One PC X 5000TA Black  
Shuttle order code: PAT-X0500TA2

### Shuttle All-in-one PC X 5000TA Black

2 GB Mem / 160GB HDD / Windows Vista



Touchscreen



Dual Core



Windows Vista

Home Basic



Images for illustration purposes only.

### Shuttle X 5000TA Black - Special Product Features



#### All applications at your fingertips

The innovative touchscreen technology delivers the simplest operation possible and makes the screen the centre of action. Its high-quality design lets you control the whole range of multimedia - music, movies, video playback and web browsers start by just touching the screen.



#### Dual Core. Do more.

The vast majority of the existing netbooks and all-in-one PCs with an Intel Atom CPU use the original Single Core version. In contrast to this, Shuttle's all-in-one PC X 5000TA stands out from the crowd with its embedded Intel Atom 330 Dual Core processor, which is boosting the productivity of the PC system, particularly with regards to multithreaded applications.



#### All-in-one PC

Your complete PC system with many components already built in comes in just one single device! This includes the webcam, microphone, mainboard, display, touchscreen input interface, Wireless LAN module and speakers. Saves you more space, looks simply stylish, less wiring.



#### Slim and chic

Designed as space-savers, this 15.6 inch all-in-one desktop PC only measures 3.6cm in depth.



#### Fanless power supply

External, fanless 65W power supply for whisper quiet operation



### Kensington Lock

This is a small, metal-reinforced hole as part of an anti-theft system. (The lock-and-cable apparatus is not included.)



### VGA Port

This VGA port can be used to connect a secondary external LCD display or beamer to the PC. It supports the clone mode operation.



### Carrying handle

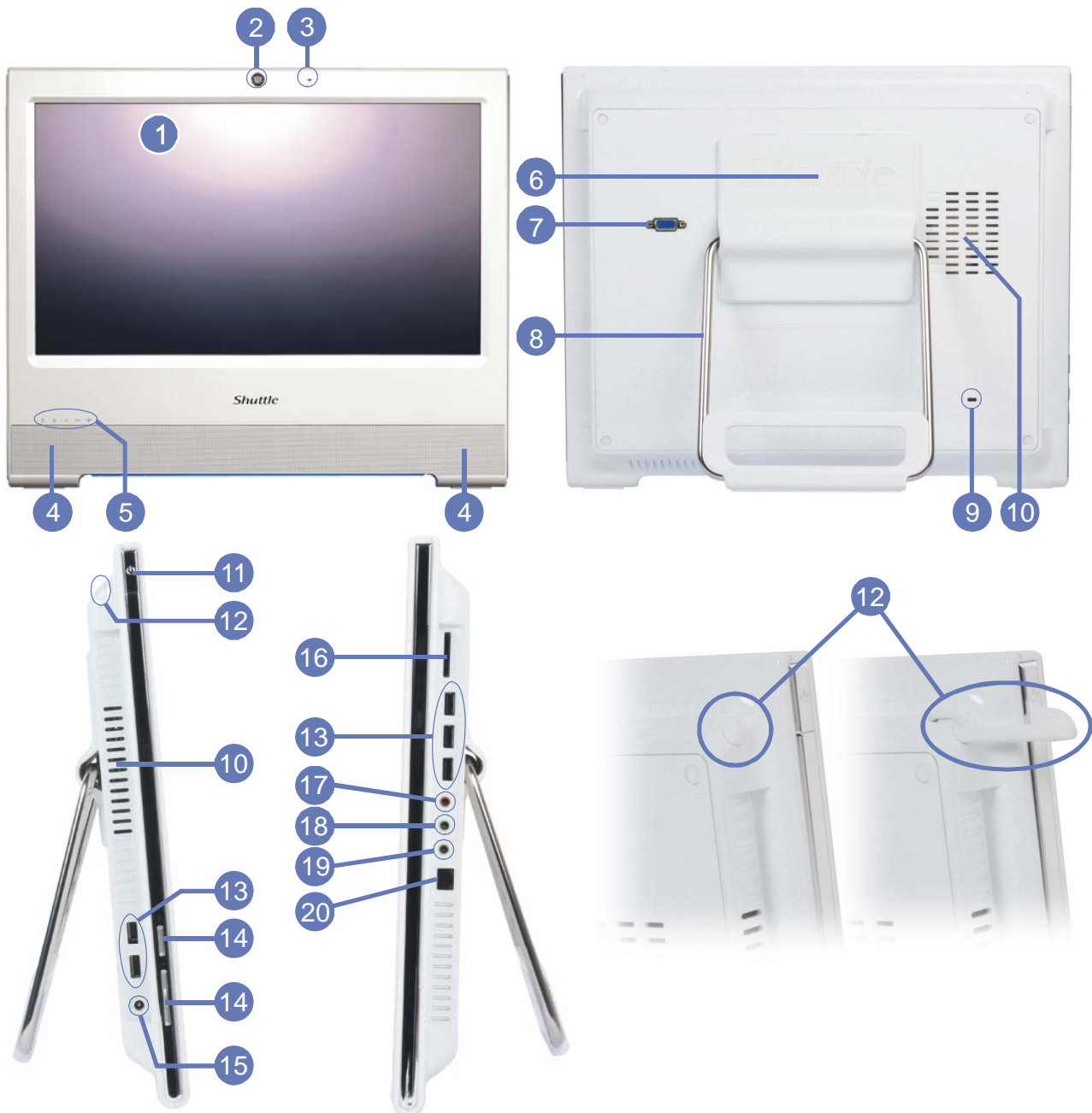
Cleverly, the X 5000TA's stand can be pulled up to serve as a handle - easy to move and light to carry with one hand.



### VESA mounting

The stand on the rear can easily be removed unveiling four VESA mounting screw holes that can be used for mounting arms and other mounting devices from a variety of manufacturers.

### Shuttle X 5000TA Black Overview (Connectors, buttons, etc.)



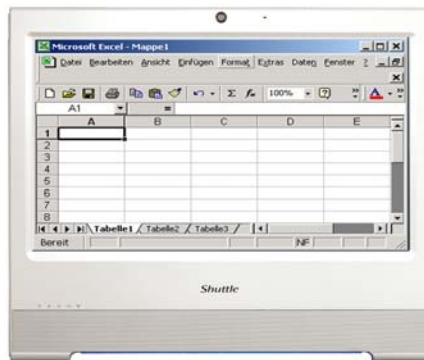
- |                           |                           |                              |
|---------------------------|---------------------------|------------------------------|
| 1 Touchscreen LCD display | 8 Stand (or handle)       | 15 DC-input for power supply |
| 2 Webcam                  | 9 Kensington lock         | 16 Card-reader               |
| 3 Microphone              | 10 Vent holes             | 17 Audio Line-in             |
| 4 Speakers                | 11 Power on button        | 18 Audio Line-out            |
| 5 LEDs                    | 12 Stylus pen with holder | 19 Microphone input          |
| 6 VESA mount              | 13 USB connectors (5x)    | 20 Gigabit LAN port (RJ45)   |
| 7 VGA port                | 14 LCD buttons            |                              |



### Shuttle X 5000TA – Range of Applications



**Entertainment**  
Music, Movies,  
Photo gallery, TV\*  
\*) TV tuner USB stick  
required



**Work**  
Banking, Shopping,  
Office, Stock trading



**Control**  
Surveillance,  
Home Automation,  
Control device



**P.O.S.**  
Point of sales



**Education**  
In schools, at home,  
for children and adults



**Communication**  
Email, VoIP, Messenger,  
Blog, Video Conferencing



**Digital Signage**  
Visual advertising,  
entertainment, displaying  
information in public areas

## Shuttle All-in-One PC X 5000TA Black Specifications

<i>Chassis</i>	Color: Black Dimensions: 391.3 x 327 x 36 mm (WxHxL) 100mm VESA mount capable Mounting hole for Kensington lock
<i>Operating system</i>	Windows Vista Home Basic
<i>Touch-screen</i>	Touchscreen function support fingertip input Resistance and single touch technology Including stylus pen for the touchscreen
<i>15.6-inch display</i>	39.6cm/15.6" LCD display, ratio: 16:9 Resolution: 1366x768 = 1.05 Megapixels Adjustable backlight unit: High power LED OSD (On Screen Display)
<i>Processor</i>	Intel Atom 330 Dual Core processor (Codename: Diamondville) 2x 1.6 GHz core clock, 533 MHz FSB 2x 512kB L2 cache Supports Hyper-Threading (4 threads total) TDP = 8 watts
<i>Memory</i>	2 GB DDR2 SO-DIMM memory (200 pin) Supports up to 2 modules DDR2-533/667 (max. 1GB per module)
<i>Chipset</i>	Intel® 945GC+ICH7 Express Chipset
<i>Hard disk drives</i>	160GB Serial ATA II hard disk, 6.35cm/2.5" format, 5400 rpm
<i>Card reader</i>	Integrated card reader supports SD and SDHC memory flash cards
<i>Webcam</i>	Integrated Webcam module with 1.3 Megapixel resolution
<i>Integrated graphics</i>	Intel Graphics Media Accelerator 950 (GMA950) with PCI-E x1 improved bandwidth, features 333MHz graphics core DX8/DX9 support and enhanced 3D performance Dynamic Video Memory Technology (DVMT) 3.0 Shared Memory max. 224MB Video out: Analog 15pin D-Sub VGA Supports Dual Display operation in clone mode

<b>5.1 audio Microphone Speakers</b>	<p>Audio Realtek® ALC 662 5.1-channel High-Definition Audio</p> <p>Three analog audio connectors (3.5mm):</p> <ol style="list-style-type: none"> <li>1) Front Line out (head phone)</li> <li>2) Rear Surround line-out (shared with microphone input)</li> <li>3) Center line-out (shared with Line in)</li> </ol> <p>Front panel with integrated microphone and 2x 2W speakers</p>
<b>Gigabit LAN</b>	<p>Realtek 8111C Ethernet network controller (Gigabit)</p> <p>Supports 100 / 1.000 MBit/s operation</p> <p>Supports Wake-on-LAN (WOL)</p>
<b>Wireless LAN (Wifi)</b>	<p>Supports 802.11 b/g and draft-n</p>
<b>Connectors</b>	<p>VGA connector (D-Sub 15 pol., analog)</p> <p>5x USB 2.0</p> <p>GigaBit LAN (RJ45)</p> <p>Audio 5.1 channel (shared with microphone, line-in, line-out)</p>
<b>LED's and buttons</b>	<p>Hard disk LED</p> <p>Voice volume LED</p> <p>Power button</p> <p>On Screen Display button</p> <p>1x panel backlight brightness setting</p>
<b>Power supply</b>	<p>External 65 power adapter (fanless)</p> <p>Input: 100~240V AC, 50~60Hz, Output: 19V DC</p> <p>Outline Dimension: 108x46x30mm, Color: Black</p>
<b>Accessories</b>	<p>User guide</p> <p>System manual</p> <p>Driver CDROM</p> <p>Recovery CDROM</p> <p><b>Stylus pen for the touchscreen</b></p> <p>Power adapter</p>
<b>Certifi- cations</b>	<p>Safety certifications: UL TÜV, CB, BSMI</p> <p>EMI certifications: CE, FCC, BSMI, C-tick</p> <p>Other certifications: Energy Star 4.0</p>
<b>Environment</b>	<p>Operating temperature: 0~35°C</p> <p>Humidity: 0~60%</p>
<b>Weight</b>	<p>Net weight: 3.6 kg</p>

## Shuttle All-in-one-PC X50-Series – Product Overview



All versions are available in **Black and White** color.

		Operating system	Memory	Hard disk	Barcode
<b>Online Configurator (BTO)</b>	<b>X 5000T</b>	Windows XP Professional Windows Vista Home Basic Windows Vista Business Windows 7	1 or 2 GB	160~500GB	–
	<b>X500V</b>	openSUSE Linux	1 or 2 GB	160~500GB	–
	<b>X50XA</b>	–	1 or 2 GB	160~500GB	–
<b>Fixed configuration</b>	<b>X 5000TA</b>	Windows Vista Home Basic	2 GB	160 GB	White: 4046047101894 Black: 4046047101931
	<b>X 5000TB</b>	Windows 7	2 GB	160 GB	White: 4046047101986 Black: 4046047101993
	<b>X500VA</b>	openSUSE Linux	2 GB	160 GB	White: 4046047101948 Black: 4046047101955
	<b>X50XB</b>	–	2 GB	160 GB	White: 4046047101917 Black: 4046047101924
<b>Barebone</b>	<b>X50 Barebone</b>	–	–	–	White: 811686007593 Black: 811686002925

Last update: October 2009