

### All-in-one Touchscreen Barebone PC

The Shuttle X50 Barebone White is an all-in-one PC boasting a 39.6cm (15.6-inch) touchscreen LCD powered by Intel's Atom 330 dual-core processor. Intended for use in the home environment, the Shuttle X50 Barebone is targeted at hardware experts seeking to build a complete system according to their individual requirements. The bulk of components is yet built in, just three components need to be installed: memory, hard disk and operating system. Equipped with Intel's GMA950 onboard graphics, it provides generous performance for daily computing with internet and office applications. A webcam, built-in speakers, card reader, WLAN and other features leave nothing you could ask for. Have any applications start up quickly by just touching the screen for working most swiftly and conveniently.

#### Feature Highlight

<i>All-in-one design</i>	<ul style="list-style-type: none"> <li>Full featured stylish PC platform</li> <li>Small: 391 x 327 x 36 mm (WHL)</li> <li>Stand can also be used as a handle</li> <li>External, fanless power supply (65W)</li> </ul>
<b>CPU &amp; Chipset</b>	<ul style="list-style-type: none"> <li>CPU: Intel ATOM 330 Dual Core</li> <li>Chipset: Intel 945GC + ICH7</li> </ul>
<b>Storage (not included)</b>	<ul style="list-style-type: none"> <li>Supports 1 or 2 GB (max. 2x 1GB)</li> <li>2x 200 pin SO-DIMM slots (max. 2x 1GB)</li> <li>Supports one 6,35cm/2,5" SATA hard disk</li> </ul>
<b>Operating system</b>	<ul style="list-style-type: none"> <li>Without operating system</li> <li>Compatible with Windows XP/Vista/7 + Linux</li> </ul>
<b>Display &amp; Graphics</b>	<ul style="list-style-type: none"> <li>39.6cm (15.6") touchscreen (1366x768)</li> <li>Integrated GMA950 graphics, 224MB UMA</li> <li>VGA Video output (clone mode)</li> </ul>
<b>Connectivity</b>	<ul style="list-style-type: none"> <li>5x USB</li> <li>Audio: Mic, Line-in/out or 5.1 Line-out</li> <li>Gigabit LAN, Wireless LAN (draft-n)</li> </ul>
<b>Built-in</b>	<ul style="list-style-type: none"> <li>SD card reader</li> <li>1.3 Megapixel webcam</li> <li>2x 2W speakers, Microphone</li> <li>100mm VESA mount capable</li> </ul>
<b>Application</b>	<ul style="list-style-type: none"> <li>Basic, Home Media</li> </ul>
<b>Warranty</b>	<ul style="list-style-type: none"> <li>24 months Bring-in Service</li> </ul>

### Shuttle All-in-One PC **X50 Barebone White**



Images for illustration purposes only.



8 11686 00759 3

Product name: Shuttle AIO X50 Barebone White  
Shuttle order code: PAB-X50001

## Shuttle X50 Barebone White - Special Product Features



### All applications at your fingertips

The innovative touchscreen technology delivers the simplest operation possible and makes the screen the centre of action. Its high-quality design lets you control the whole range of multimedia - music, movies, video playback and web browsers start by just touching the screen.



### Dual Core. Do more.

The vast majority of the existing netbooks and all-in-one PCs with an Intel Atom CPU use the original Single Core version. In contrast to this, Shuttle's all-in-one PC stands out from the crowd with its embedded Intel Atom 330 Dual Core processor, which is boosting the productivity of the PC system, particularly with regards to multithreaded applications.



### What does "Barebone" mean?

The Shuttle X50 Barebone is targeted at hardware experts seeking to build a complete system according to their individual requirements. The bulk of components is yet built in, just the following hardware is required to be installed by the purchaser in this case:

- One 6.35cm/2.5" Serial ATA hard disk
- One or two DDR2-667/800 SO-DIMM memory modules (200 pins)
- Optional: USB keyboard and USB mouse
- Operating system (Windows XP/Vista/7 or Linux)



### All-in-one PC

Your complete PC system with many components already built in comes in just one single device! This includes the webcam, microphone, mainboard, display, touchscreen input interface, Wireless LAN module and speakers. Saves you more space, looks simply stylish, less wiring.



### Slim and chic

Designed as space-savers, this 15.6 inch all-in-one desktop PC only measures 3.6cm in depth.



### Fanless power supply

External, fanless 65W power supply for whisper quiet operation



### Kensington Lock

This is a small, metal-reinforced hole as part of an anti-theft system. (The lock-and-cable apparatus is not included.)



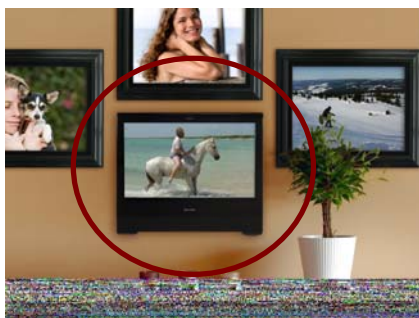
### VGA Port

This VGA port can be used to connect a secondary external LCD display or beamer to the PC. It supports the clone mode operation.



### Carrying handle

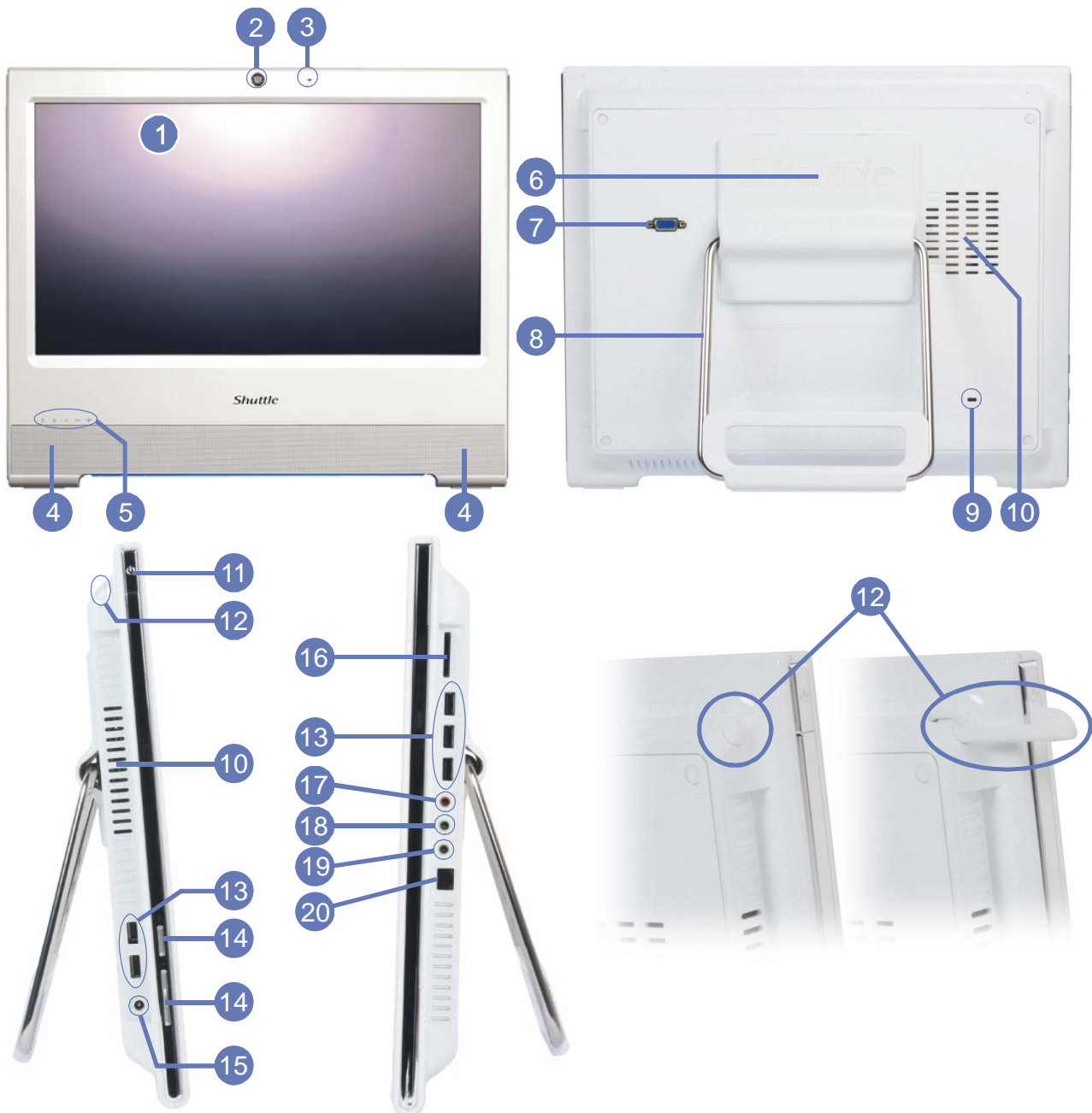
Cleverly, the stand can be pulled up to serve as a handle - easy to move and light to carry with one hand.



### VESA mounting

The stand on the rear can easily be removed unveiling four VESA mounting screw holes that can be used for mounting arms and other mounting devices from a variety of manufacturers.

### Shuttle X50 Barebone White Overview (Connectors, buttons, etc.)



- 1 Touchscreen LCD display
- 2 Webcam
- 3 Microphone
- 4 Speakers
- 5 LEDs
- 6 VESA mount
- 7 VGA port

- 8 Stand (or handle)
- 9 Kensington lock
- 10 Vent holes
- 11 Power on button
- 12 Stylus pen with holder
- 13 USB connectors (5x)
- 14 LCD buttons

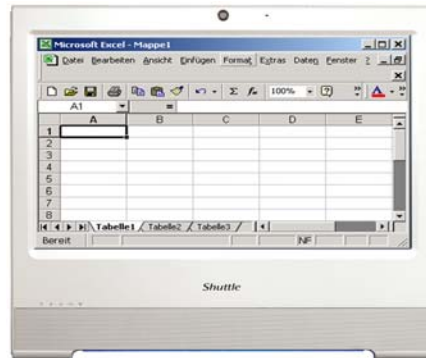
- 15 DC-input for power supply
- 16 Card-reader
- 17 Audio Line-in
- 18 Audio Line-out
- 19 Microphone input
- 20 Gigabit LAN port (RJ45)



### Shuttle X50 Barebone – Range of Applications



**Entertainment**  
Music, Movies,  
Photo gallery, TV\*  
\*) TV tuner USB stick  
required



**Work**  
Banking, Shopping,  
Office, Stock trading



**Control**  
Surveillance,  
Home Automation,  
Control device



**P.O.S.**  
Point of sales



**Education**  
In schools, at home,  
for children and adults



**Communication**  
Email, VoIP, Messenger,  
Blog, Video Conferencing



**Digital Signage**  
Visual advertising,  
entertainment, displaying  
information in public areas

## Shuttle X50 Barebone Black – Specifications

<i>Chassis</i>	Color: white Dimensions: 391.3 x 327 x 36 mm (WxHxL) 100mm VESA mount capable Mounting hole for Kensington lock
<i>Operating system</i>	This system comes without operating system. It is compatible with Window XP, Windows Vista, Windows 7 und Linux
<i>Touch-screen</i>	Touchscreen function support fingertip input Resistance and single touch technology Including stylus pen for the touchscreen
<i>39.6cm (15.6-inch) display</i>	39.6cm / 15.6" LCD display, ratio: 16:9 Resolution: 1366x768 = 1.05 Megapixels Adjustable backlight unit: High power LED OSD (On Screen Display)
<i>Processor</i>	Intel Atom 330 Dual Core processor (Codename: Diamondville) 2x 1.6 GHz core clock, 533 MHz FSB 2x 512kB L2 cache Supports Hyper-Threading (4 threads total) TDP = 8 watts
<i>Memory</i>	Supports up to 2 modules DDR2-667/800 SO-DIMMs with 200 pins (max. 1GB per module)
<i>Chipset</i>	Intel® 945GC+ICH7 Express Chipset
<i>Hard disk drives</i>	Supports one Serial ATA II hard disk in 6.35cm / 2.5" format
<i>Card reader</i>	Integrated card reader supports SD and SDHC memory flash cards
<i>Webcam</i>	Integrated Webcam module with 1.3 Megapixel resolution
<i>Integrated graphics</i>	Intel Graphics Media Accelerator 950 (GMA950) with PCI-E x1 improved bandwidth, features 333MHz graphics core DX8/DX9 support and enhanced 3D performance Dynamic Video Memory Technology (DVMT) 3.0 Shared Memory max. 224MB Video out: Analog 15pin D-Sub VGA Supports Dual Display operation in clone mode

<b>5.1 audio Microphone Speakers</b>	Audio Realtek® ALC 662 5.1-channel High-Definition Audio Three analog audio connectors (3.5mm): 1) Front Line out (head phone) 2) Rear Surround line-out (shared with microphone input) 3) Center line-out (shared with Line in) Front panel with integrated microphone and 2x 2W speakers
<b>Gigabit LAN</b>	Realtek 8111C Ethernet network controller (Gigabit) Supports 100 / 1.000 MBit/s operation Supports Wake-on-LAN (WOL)
<b>Wireless LAN (Wifi)</b>	Supports 802.11 b/g and draft-n
<b>Connectors</b>	VGA connector (D-Sub 15 pol., analog) 5x USB 2.0 GigaBit LAN (RJ45) Audio 5.1 channel (shared with microphone, line-in, line-out)
<b>LED's and buttons</b>	Hard disk LED Voice volume LED Power button On Screen Display button 1x panel backlight brightness setting
<b>Power supply</b>	External 65 power adapter (fanless) Input: 100~240V AC, 50~60Hz, Output: 19V DC Outline Dimension: 108x46x30mm, Color: Black
<b>Accessories</b>	User guide System manual Driver CDROM Recovery CDROM Stylus pen for the touchscreen Power adapter
<b>Certifi- cations</b>	Safety certifications: UL TÜV, CB, BSMI EMI certifications: CE, FCC, BSMI, C-tick Other certifications: Energy Star 4.0
<b>Environment</b>	Operating temperature: 0~35°C Humidity: 0~60%
<b>Weight</b>	Net weight: 3.6 kg
<b>Warranty</b>	24 months Bring-in Service

### Shuttle X50 Barebone Installation Instructions



As a barebone, the device is delivered without memory and hard drive. Please note the following when installing or removing certain components. The device features two SO-DIMM slots for a maximum capacity of 2x 1GB DDR2-667/800 memory and one 2.5 inch drive bay for one S-ATA hard disk.



**Please note and proceed as follows:**

- a)** Only authorized and skilled personnel must intervene
- b)** Improper handling might damage the device which is not covered by warranty
- c)** To avoid damage of electronic components by electrostatic discharge (ESD), ensure that the static electricity of your body is diverted permanently before you touch electronic components. Use an earthing wrist strap and an anti-static ground mat, if possible.



- (0)** Put the device on a soft cloth with the display facing downwards or use the white pouch the device was delivered in.



- (1)** Disconnect the device from the mains and put it on a soft base with the display facing downward and fold the stand vertically upward. Next, carefully remove the cap with the Shuttle logo that is clicked into place by six hooks. Carefully press the side of the cap with your fingertips to loosen it. Otherwise the cap can be loosened using a plastic card.

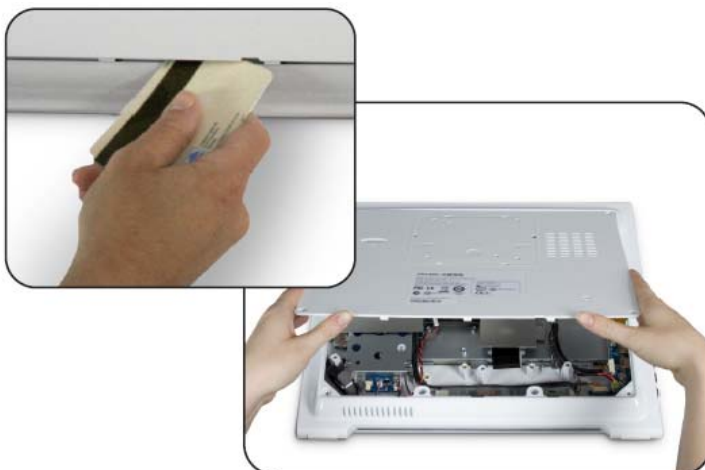




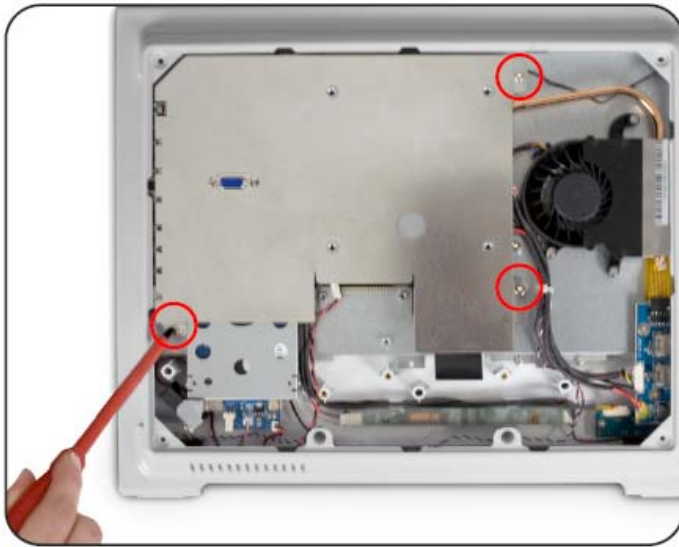
**(2)** Loosen the four cross-head screws (or Phillips screws) to remove the stand



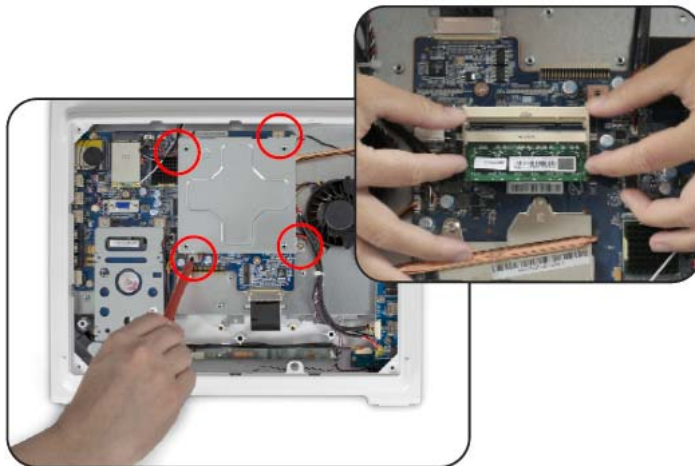
**(3)** Remove the four cross-head screws that fix the case cover.



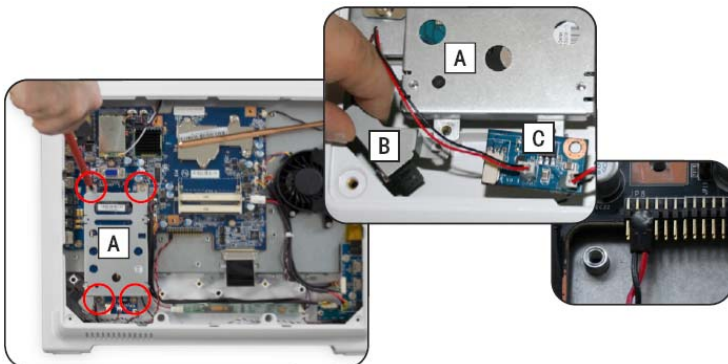
**(4)** The case cover is clicked into place by several hooks. At the bottom of the case is a notch that can be used to lever the case cover out of place by carefully using a screwdriver or plastic card. Be sure to apply only little force in order not to break the hooks.



**(5)** As the next step, remove the large electromagnetic shielding (EMI cover). This metal sheet is fixed by three cross-head screws.



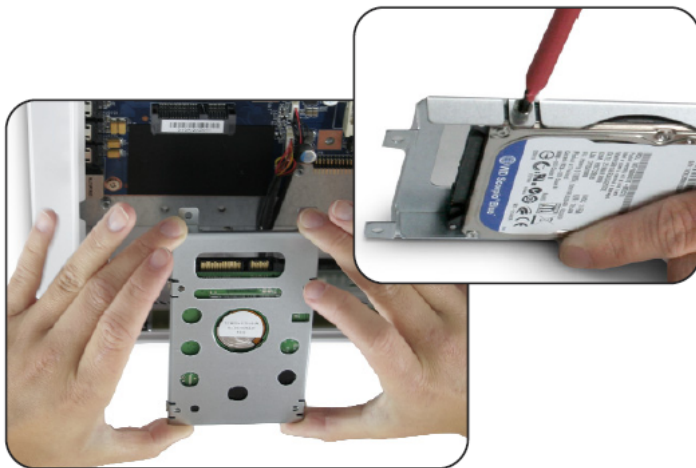
**(6)** Another shielding is fixed by four screws. Only remove this part to install or exchange memory modules. To remove such memory modules, carefully bend back the cramps on both sides of the module. Please see the notch when installing the module to make sure it faces in the right direction.



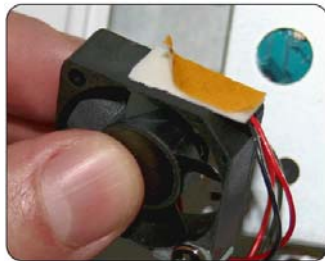
**(7)** Loosen the four screws of the drive cage.

**In case of a hard disk fan is included:**

**(A)** Remove the screws including the affixed fan (B) with its small board (C) while leaving the cables connected.



**(8)** Please insert a 2.5 inch S-ATA hard disk with the connectors facing towards the metal sheet into the drive cage. Please then fix the hard disk with four screws and carefully push it in afterwards to connect it.

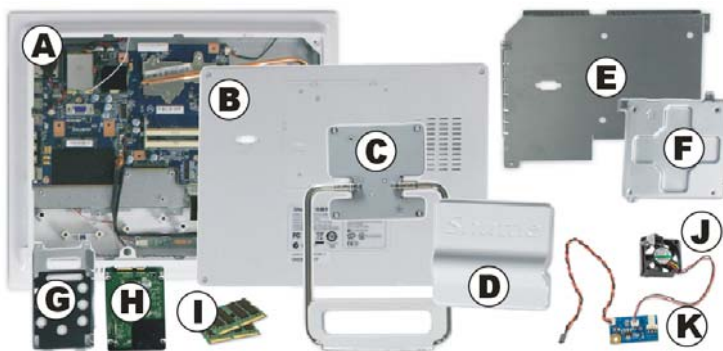


**In case of a hard disk fan is included:**

**(9)** Remove the protective foil on the adhesive tape that is attached to the fan. Then fix the drive cage with the fan and board with four screws.

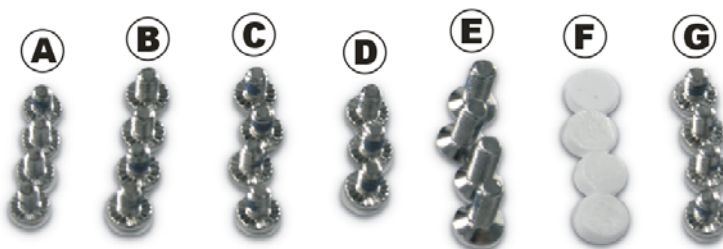


**(10)** Please re-mount the two electromagnetic shieldings, the case cover and the stand vice versa. Finally, click the cap with the Shuttle logo back into place and cover the four screw holes with the self-adhesive rubber coverings included in the delivery scope.



**Overview of parts:**

- (A) X50-chassis
- (B) case cover
- (C) stand
- (D) cap with Shuttle logo
- (E) large shielding
- (F) little shielding
- (G) drive cage
- (H) hard disk
- (I) memory modules
- (J) cooling fan **(optional)**
- (K) small board **(optional)**



**The screws removed:**

- (1) hard disk x4
- (2) drive cage x4
- (3) little shielding x4
- (4) large shielding x3
- (5) stand x4
- (6) rubber coverings x4
- (7) case cover x4

## Shuttle All-in-one-PC X50-Series – Product Overview



All versions are available in **Black and White** color.

		Operating system	Memory	Hard disk	Barcode
<b>Online Configurator (BTO)</b>	<b>X 5000T</b>	Windows XP Professional Windows Vista Home Basic Windows Vista Business Windows 7	1 or 2 GB	160~500GB	–
	<b>X500V</b>	openSUSE Linux	1 or 2 GB	160~500GB	–
	<b>X50XA</b>	–	1 or 2 GB	160~500GB	–
<b>Fixed configuration</b>	<b>X 5000TA</b>	Windows Vista Home Basic	2 GB	160 GB	White: 4046047101894 Black: 4046047101931
	<b>X 5000TB</b>	Windows 7	2 GB	160 GB	White: 4046047101986 Black: 4046047101993
	<b>X500VA</b>	openSUSE Linux	2 GB	160 GB	White: 4046047101948 Black: 4046047101955
	<b>X50XB</b>	–	2 GB	160 GB	White: 4046047101917 Black: 4046047101924
<b>Barebone</b>	<b>X50 Barebone</b>	–	–	–	White: 811686007593 Black: 811686002925

Last update: October 2009