

### The new pioneer in the Mini-PC sector

The next level in Shuttle's quest for optimum performance! Fueled by the Intel X48 Express chipset, this Mini-PC Barebone is breaking into new areas: With an FSB of 1600 MHz Intel's Core 2 Quad Extreme QX9770 processor with 3.20 GHz and 12 MB cache in 45nm-design has found its ideal home. Equipped with up to 8 GB memory, three hard disks and a fingerprint-scanner, Bluetooth, WLAN, 2x Gigabit-LAN and space for two high-speed graphics cards, the XPC Barebone SX48P2 Deluxe knows no limits. The pre-installed 80-PLUS 450 watt power supply was developed specially for Mini-PCs. A digital 8-phase voltage transformer on the mainboard ensures a reliable power supply even at maximum load. Some PCs with such a small footprint of 32.5 x 22 x 21 cm (DWH) are only full of hot air. Shuttle on the other hand delivers performance and features in the smallest of spaces.

### Feature Highlight

<b>P2 chassis</b>	<ul style="list-style-type: none"> <li>Black aluminum chassis</li> <li>Drive bays: 1x 5.25", 3x 3.5"</li> </ul>
<b>Chipset</b>	<ul style="list-style-type: none"> <li>Intel X48 Express + ICH9R</li> </ul>
<b>CPU</b>	<ul style="list-style-type: none"> <li>Socket 775</li> <li>Supports Core 2 Quad/Extreme/Duo</li> <li>Supports 1600, 1333, 1066 &amp; 800MHz FSB</li> <li>3 zones cooling system, OASIS heat-pipe</li> </ul>
<b>Slots</b>	<ul style="list-style-type: none"> <li>2x PCI-Express 2.0 (x16)</li> <li>1x Mini-PCIe (supports Turbo Memory)</li> </ul>
<b>Memory</b>	<ul style="list-style-type: none"> <li>Supports 4x DDR3-1066/1333/1600</li> <li>Up to 8 GBytes total size</li> </ul>
<b>Drive connectors</b>	<ul style="list-style-type: none"> <li>4x SATA (internal) + 2x eSATA (external)</li> <li>Including eSATA power connector/cable supports RAID 0, 1, 5, 10 and JBOD</li> <li>1x IDE ATA 100, 1x floppy disk drive</li> </ul>
<b>Deluxe-Features</b>	<ul style="list-style-type: none"> <li>Fingerprint scanner, USB Speed-Link</li> <li>Bluetooth 2.0, WLAN 802.11b/g</li> </ul>
<b>Other Features</b>	<ul style="list-style-type: none"> <li>8-ch HD-audio, SPDIF out</li> <li>Dolby® Digital Live! and DTS™ Connect</li> <li>Dual GigaBit LAN (supports Teaming)</li> <li>USB 2.0 (2x front, 6x rear, 4x onboard)</li> </ul>
<b>Power supply</b>	<ul style="list-style-type: none"> <li>450 Watt ATX power supply (80 PLUS)</li> </ul>
<b>Application</b>	<ul style="list-style-type: none"> <li>Gaming</li> </ul>

## Prima »xpc Barebone SX48P2 Deluxe

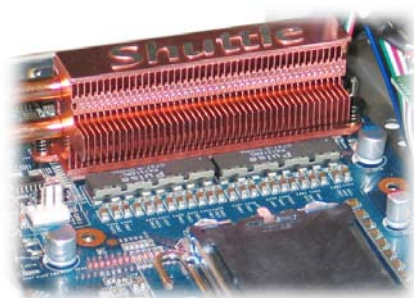


Images for illustration purposes only.



## Shuttle XPC Barebone SX48P2 Deluxe – Special Product Features

Prima  
XPC



max. 8GB  
DDR3



### Shuttle XPC Prima Series offering extreme performance

Shuttle has introduced the XPC Prima series, with its revolutionary high performance models, for professional and performance demanding applications whether they be at work, everyday or for high-tech gaming.

### Supports 1600 MHz FSB and 45nm processor technology

This Shuttle product supports the Intel® Core™ 2 Duo and Intel® Core™ 2 Quad processors with up to 1600 MHz front side bus and even the new 45nm Core™ 2 Multi-core processors. Multi core brings multi power!

### 8-phase digital power design

Today's high end mainboards often have a 4-phase power design. The Shuttle XPC Barebone SX48P2 Deluxe is based on a special 8 phase digital voltage regulator power design which has the advantage of quick transient response. It acts faster than 4-phase power designs to stabilize output current and voltage. This is especially critical when the CPU requires immediate current support when under heavy workload. Furthermore it operates at lower temperatures to increase component lifespan.

### OASIS Cooling Technology

The newly designed OASIS cooling technology deliver a unique system of heat-sinks covering the MOSFET modules, the north bridge as well as the south bridge that effectively dissipates heat without the use of fans. Featuring an all-new Heat pipe design, Shuttle OASIS allows users to enjoy longer component lifetime through lower temperatures, added system stability and silent operation.

### Supports up to 8GB DDR3 memory

As a most functional and high-performance gaming platform, this XPC features four memory slots and supports incredible 8GB of DDR3-1066/1333/1600 RAM. DDR3 SDRAM provides a much higher frequency potential than DDR2. The X48 Express chipset was officially designed to work with 1600MHz FSB and DDR3-1600 RAM speeds to deliver ground-breaking performance for enthusiasts to speed up their systems even more.

### Supports two PCI Express x16 graphics cards

The Intel X48 chipset takes a major step beyond the P35 with its 32 PCI Express 2.0 lanes. The Shuttle XPC Barebone SX48P2 Deluxe supports two slots PCI Express x16 Version 2.0 delivers up to 16GB/s bandwidth per port, double that of PCIe 1.0, ensuring plenty of bandwidth for future graphics cards. Two graphics cards can be used to enable 4-monitor-operating.

### Finest cinematic surround sound experience

What would a home theater be without booming, immersive 7.1 channel surround sound? Experience state-of-the-art sound quality provided by Dolby® Digital Live and DTS® Connect functionality.

**450W** **80 PLUS**



### 80 PLUS® Certified Power Supplies

The 80 PLUS® performance specification requires power supplies in computers and servers to be 80% or greater energy-efficient. The SX48P2 Deluxe is in fact the first Shuttle XPC Barebone which has a powerful 450W power supply built in as standard.

### Fingerprint reader

With an added a layer of security protection thru the integrated biometric fingerprint reader, you can keep your digital identity and data more secure and no longer worry about having to memorize for memorizing multiple passwords.

### Innovative Speed-Link technology

File sharing among two PCs has never been easier with the innovative Speed-Link technology, simply connects both systems thru a USB cable without having the hassle of driver installation or worry about insufficient space of a DVD disc.

### WLAN and Bluetooth

The built-in Bluetooth 2.0 Dongle connects the Shuttle XPC with surrounding Bluetooth-capable peripherals. The integrated 802.11 b+g WLAN antenna make the Shuttle XPC ready for a wireless connectivity to Internet or to other home PCs.

### Dual Gigabit LAN with Teaming Support

This XPC features even two high-speed Gigabit LAN ports. The teaming function allows you to group both available network adapters together to function as a single adapter - a method of creating a virtual LAN. The benefit of this approach is that it enables load balancing and failover.

### Supports up to three internal hard disks

The P2 chassis design supports three hard disks (or two hard disks and a 3.5" card reader) and an optical 5.25" drive - which is plenty for the case capacity of just 15 litres.

### 2x eSATA with External Power

The back panel provides two external Serial ATA ports and a power port. The included cables make it a snap to connect your external hard drive to your XPC. The Serial ATA interface is up to six times faster than USB 2.0/Firewire.



### Supports RAID functionality

The south bridge incorporate six Serial ATA connectors with high performance RAID functions in RAID 0, 1, 5, 0+1, and JBOD. It is the ideal solution to enhance hard disk performance and data back up protection without the cost of add-on cards.



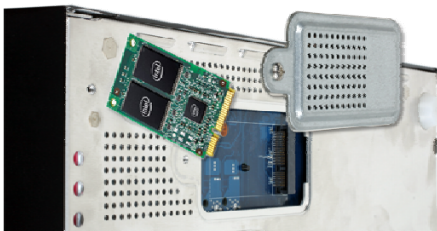
### User Friendly Dynamic OverClock feature\*)

The user can easily overclock the system through the bios from 3%,5%,7% to10%.



### New Era of All-Solid Capacitor Shuttle Mainboards

By using all-solid capacitors Shuttle mainboards provide industry leading stability, reliability and longevity for PC gaming and entertainment systems. The average lifespan for a solid capacitor is more than six times greater than the more common and less expensive electrolytic capacitors.



### Mini PCIe slot supports Intel Turbo Memory module

There is one Mini-PCIe x1 slot at the bottom of the chassis which supports Intel® Turbo Memory (codename: Robson). Intel® Turbo Memory lets your system actually learn your habits to provide better system response. That's because it stores frequently used information near the processor, where it's more quickly available.



### Supports Windows Vista Premium

Breathtaking Windows Aero™ 3D visual interface and a host of groundbreaking new features, Windows® Vista™ Premium promises to deliver a streamlined computing experience designed to fundamentally change how users view, find and organize their digital information.

#### \*) Overclocking Warning:

Please note there is a certain risk involved with overclocking, including adjusting the setting in the BIOS or using third-party overclocking tools. Overclocking may affect your system stability or even cause damage of the components and devices of your system. It is done at your own risk and expense. Shuttle cannot be held responsible for possible damage caused by overclocking.

## Shuttle XPC Barebone SX48P2 Deluxe Specifications

<p><i>Special Deluxe-Features</i></p>	<p>Fingerprint recognition technology                  Speed-Link - easily connect 2 PCs via USB and share data                  Wireless LAN 802.11b/g, up to 54 Mbit/s data transfer rate                  Bluetooth 2.0 dongle</p>
<p><i>Chassis</i></p>	<p>P2-type aluminum chassis, color: black                  storage bays: 1 x 5.25", 3 x 3.5" (2 internal)                  stealthed drive doors                  dimensions: 32.5 x 22 x 21 cm (LWH)                  weight: 4.2 kg net / 6.0 kg gross</p>
<p><i>Mainboard</i></p>	<p>Shuttle FX48, Shuttle form factor, proprietary design for XPC SX48P2 Deluxe                  Chipset: Intel X48 Express (MCH) + ICH9R (I/O Controller Hub)                  Solid Capacitors for excellent heat resistance for enhanced system durability                  Color slots/connectors design (Power switch, USB, PCIe, DDR3)                  Dimensions: 20.5 x 28 cm</p>
<p><i>Power Supply</i></p>	<p>450 Watt ATX mini PSU, AC input voltage: 100~240V                  80 PLUS® certified (80% or greater energy-efficient)                  Dimensions: 85(W) x 83(H) x150(D) mm                  Connectors: 20-pin ATX, 4-pin ATX12V                  Active PFC circuit (Power Factor Correction)                  With AC power switch</p>
<p><i>Processor Support</i></p>	<p>Socket 775 supports Intel processors with Core technology                  Supports 800, 1066, 1333 or 1600MHz front side bus (FSB)                  Supports Core 2 Quad/Extreme/Duo, Pentium Dual-Core, Pentium D                  Supports Core 2 multi-core processors in 45nm technology                  Please refer the support list for detailed processor support information:  <a href="http://global.shuttle.com/support_list.jsp">http://global.shuttle.com/support_list.jsp</a></p>
<p><i>Over-clocking *)</i></p>	<p>CPU frequency, CPU voltage, RAM frequency, RAM voltage                  Dynamic Overclock feature (DOC):                  Easily overclock from 3/5/7/10% through the BIOS.</p>
<p><i>Cooling system</i></p>	<p>Shuttle I.C.E. heat-pipe module (Integrated Cooling Engine)                  SilentX Cooling and Noise Reduction Technology                  advanced Heatpipe technology, linear fan control.                  3 independent airflow zones: CPU, HDD and Case                  (including power supply, mainboard and graphics card)                  OASIS Cooling Technology: additional fanless heat-pipe design                  covering the MOSFET modules (VRM), north- and southbridge</p>

<p><i>Memory Support</i></p>	<p>4 memory slots à 240 pins          Supports DDR3-1066/1333/1600 memory (unbuffered, non-ECC)          Supports Dual Channel          max. 2 GB per DIMM, up to a total size of 8 GB</p>
<p><i>PCI-Express-Expansion Slots</i></p>	<p>2x PCI-Express x16 Version 2.0 expansion slots for x16 graphics cards (full 16 lanes each slot)          Supports Dual Graphics: Two graphics cards can be used to enable 4-monitor-operating.          Supports two single-slot or one double-width graphics card.          1x Mini-PCIe x1 slot at the bottom of the chassis supports Intel Turbo Memory (codename: Robson)</p>
<p><i>8-channel Audio</i></p>	<p>7.1 channel High Definition Audio, Realtek ALC888DD codec          Supports Dolby® Digital Live! and DTS™ Connect (Digital Theater Systems)          analog: line-out (8-ch), line-in, microphone, CD-in, AUX          digital: optical and coaxial S/PDIF-out</p>
<p><i>Dual Gigabit-LAN Controller</i></p>	<p>2x RJ45 connectors supports Teaming-Mode**)           2x Marvell 88E8056 Ethernet network controller          With PCI Express x1 interface          IEEE 802.3u 1000Base-T compliant          Supports 10 / 100 / 1.000 MBit/s operation          Supports Wake-on-LAN</p>
<p><i>Drive connectors</i></p>	<p>Serial-ATA II, 3 Gb/s (300 MB/s) bandwidth          4x internal (SATA) plus 2x external (eSATA)          External Serial ATA power port with cable          Intel Matrix Storage Technology enabled striping and mirroring          Supports RAID 0, 1, 5, 10 and JBOD on just two or three hard disk drives          Supports Native Command Queuing (NCQ)          1x IDE ATA 100 drives (JMicron JMB368 Controller)          1x floppy disk drive</p>
<p><i>Front panel connectors &amp; functions</i></p>	<p>Microphone          Headphone (Line-out)          2x USB 2.0          Fingerprint recognition          Power button with LED          Hard disk LED          Bluetooth LED          WiFi (WLAN) LED          Reset button          Fingerprint Sensor          Speedlink On/Off button</p>

<p><i>Back panel connectors</i></p>	<p>6x USB 2.0                  2x GigaBit LAN (RJ45)                  2x External Serial ATA (eSATA) with power port                  8-ch Audio line-out (2x rear/front, bass/center, surround/back)                  Digital Audio S/PDIF output: optical and coaxial                  Audio Line-in                  Audio Microphone input                  Clear CMOS button                  Wireless LAN Antenna</p>
<p><i>Other connectors</i></p>	<p>4x USB 2.0 (two sets with 2x5 pins)                  4x fan connectors (3x 4 pins, 1x 3 pins)                  Headers for PS/2 mouse and PS/2 keyboard                  CIR header</p>
<p><i>Accessories</i></p>	<p>Multi-language XPC manual                  Quick guides for Bluetooth (BT12) and WLAN (PN20)                  Driver DVD with software (Norton Internet Security 2007, Adobe Reader)                  Data cables: 1x floppy, 1x PATA, 3x SATA (PATA/2xSATA preinstalled)                  1 set to 2 set 6-pin VGA power cable                  2x CrossFire bridges for ATI graphics cards                  USB cable (type A-to-A) for USB Speedlink function                  1 set 4 pin to SATA power cable                  Dipole antenna for the pre-installed WLAN module                  AC Power Cord                  2x additional Front feet, Screws, Heatsink Compound</p>

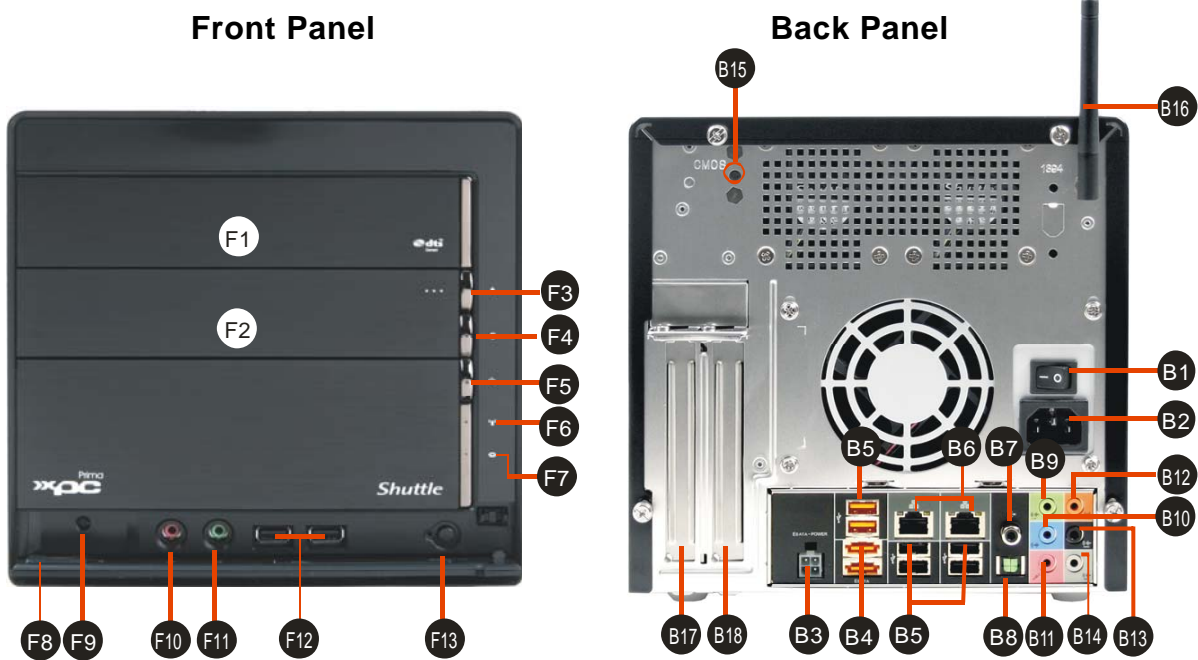
**\*) Overclocking Warning**

Please note there is a certain risk involved with overclocking, including adjusting the setting in the BIOS or using third-party overclocking tools. Overclocking may affect your system stability or even cause damage of the components and devices of your system. It is done at your own risk and expense. Shuttle cannot be held responsible for possible damage caused by overclocking.

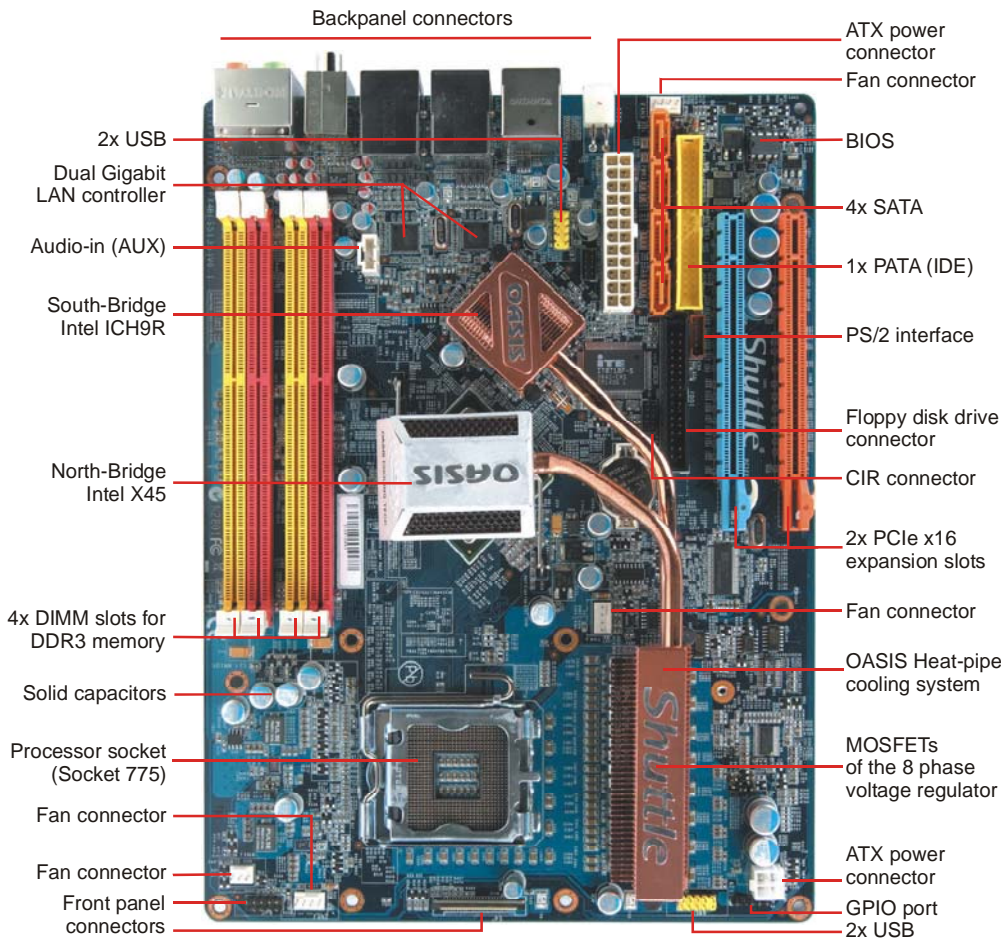
**\*\*\*) Teaming Mode**

The teaming function allows you to group both available network adapters together to function as a single adapter - a method of creating a virtual LAN. The benefit of this approach is that it enables load balancing and failover.

Shuttle XPC Barebone SX48P2 Deluxe – Connectors and Components



Mainboard



**Front Panel**

- F1 5.25" bay
- F2 3.5" bay
- F3 Eject button
- F4 HDD LED
- F5 Power Switch & LED
- F6 WLAN LED
- F7 Bluetooth LED
- F8 Fingerprint sensor
- F9 Reset Button
- F10 Microphone input
- F11 Headphone output
- F12 USB 2.0 Ports
- F13 Speed-link on/off

**Back Panel**

- B1 AC Power Switch
- B2 AC Power Socket
- B3 External SATA power
- B4 External SATA ports
- B5 USB 2.0 ports
- B6 Dual Gigabit LAN ports
- B7 S/PDIF out (coaxial)
- B8 S/PDIF out (optical)
- B9 Line out (front)
- B10 Line in
- B11 Microphone in
- B12 Line out (center/bass)
- B13 Line out (back)
- B14 Line out (side)
- B15 Clear CMOS button
- B16 Wireless LAN antenna
- B17 PCI Express x16 slot
- B18 PCI Express x16 slot

© 2006 by Shuttle Computer Handels GmbH (Germany). All information subject to change without notice. Pictures for illustration purposes only.