

### Seemingly small, but big in reality

Attractive, quiet, a most appealing price and equipped with an integrated slot designed for 5.25" drives - all of which enables the K-Series Barebone K48 to complement Shuttle's growing model range for simple applications such as the internet and MS-Office programs. Large amounts of content are increasingly being sourced from the network - so the Barebone K48 comes with Gigabit-LAN and is therefore always connected at high-speed. A WLAN option is also possible. The DVI-output enables the integrated graphics to offer sharp images even on larger displays. The changeable front panel means that it can be individually designed in an instant. The Shuttle K-Series Barebone K48 is in many respects an ideal choice for simple applications, whether for working or for digital media playback..

### Shuttle K-Series Barebone **K48**



#### Feature Highlight

<b>K chassis</b>	<ul style="list-style-type: none"> <li>Black chassis with aluminum cover</li> <li>Dimensions: 29.5 x 20 x 18.5 cm (L/W/H)</li> <li>Bays: 2x 3.5" (internal) and 1x 5.25" (ext.)</li> <li>MyKover: customizable front panel design</li> </ul>
<b>Chipset</b>	<ul style="list-style-type: none"> <li>Intel 945GC + ICH7</li> </ul>
<b>Graphics</b>	<ul style="list-style-type: none"> <li>Integrated GMA950 graphics, max. 224MB</li> <li>Video out: digital DVI and analog D-Sub</li> <li>Supports Dual Monitor operating (Clone)</li> </ul>
<b>CPU</b>	<ul style="list-style-type: none"> <li>Socket 775</li> <li>Core 2 Duo, Pentium Dual-Core und Celeron</li> <li>TDP max. 65W</li> <li>Supports 1066/800/533 MHz FSB</li> <li>For use with Intel standard cooling fan (not included). Please purchase an Intel boxed processor.</li> </ul>
<b>Memory</b>	<ul style="list-style-type: none"> <li>Supports 2x DDR2-533/667</li> <li>Supports up to 2GB (2x 1GB)</li> </ul>
<b>Drive connectors</b>	<ul style="list-style-type: none"> <li>2x SATA II (3 Gbit/s)</li> <li>1x IDE ATA 100</li> </ul>
<b>Other connectors</b>	<ul style="list-style-type: none"> <li>5.1 HD audio</li> <li>USB 2.0 (4x rear, 4x onboard)</li> <li>Gigabit LAN</li> <li>Optional WLAN adapter (PN20)</li> </ul>
<b>Power supply</b>	<ul style="list-style-type: none"> <li>100 Watt Flex-ATX power supply</li> </ul>
<b>Application</b>	<ul style="list-style-type: none"> <li>Home, Business</li> </ul>



Images for illustration purposes only.

## Shuttle K-Series Barebone K48 – Special Product Features



### Supports Intel Core 2 Duo Processors

The Shuttle K-Series Barebone K48 is designed to support several Intel Desktop processors with 65nm and 45nm process technology up to the powerful Core 2 Duo E7xxx series (max. 1066MHz FSB and 65W TDP).



### Intel® Graphics Media Accelerator 950

The Intel GMA 950 is an intelligent and responsive 256-bit graphics engine built into the chipset that is on the mainboard. It supports 224 MB maximum shared memory and 2048x1536 at 75 Hz maximum resolution.



### Dual View Technology with DVI and VGA

Dual View technology offers multiple display support on up to two separate monitors. This allows more users to see the desktop image at the same time. The integrated graphics supports clone mode, only.



### DVI output

The Digital Visual Interface (DVI) allows the signal to stay the way it was intended to be all the way to the end display and this results in a far more compelling image that is razor sharp and wonderfully vibrant.



### Gigabit LAN Network

Today's media-rich communications across the Internet and within organizations are creating new demands on clients in Local Area Networks. For that reason Shuttle introduces the Gigabit LAN performance even in the business and entry level segment of their Mini-PC line.



### High speed USB 2.0 interface

The back panel provides 4 USB 2.0 ports which support up to 480 Mb/s data transfer rate for data intensive external devices.



### SATA 3Gb/s storage interface

High speed storage improves transfer rate for improved data access. The SATA II specification doubles bus bandwidth from 1.5Gb/s to 3Gb/s.



### MyKover: customizable front panel design

The enjoyable MyKover styles your home with more fun, just 1-minute, 2-clicks and 3-steps by inserting the stunning pictures behind the crystal panel.



### Supports Windows Vista Premium

Breathtaking Windows Aero™ 3D visual interface and a host of groundbreaking new features, Windows® Vista™ Premium promises to deliver a streamlined computing experience designed to fundamentally change how users view, find and organize their digital information.

## Shuttle K-Series Barebone K48 Specifications

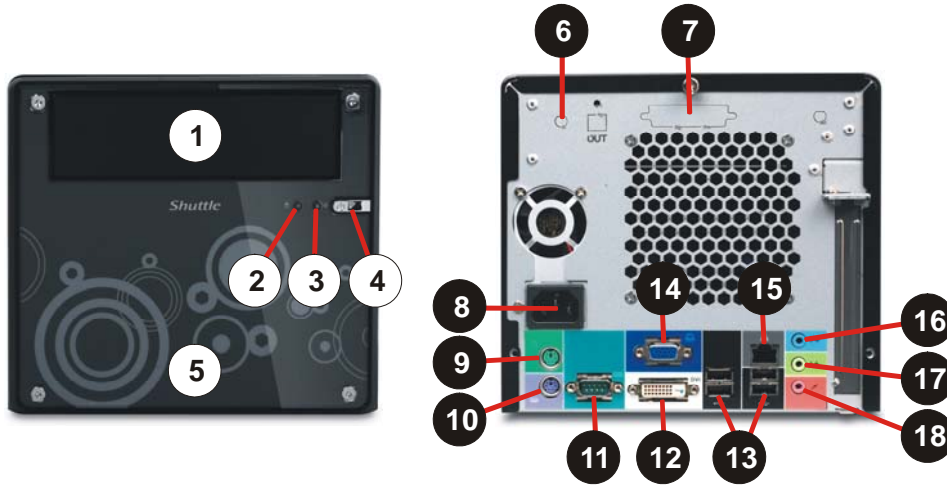
<b>Chassis</b>	<p>Black K-type chassis with aluminum cover and acrylic front plate</p> <p>Temperature controlled 92x92x25mm rear chassis fan</p> <p>Storage bays: 2x 3.5" internal, 1x 5.25" external</p> <p>Dimensions: 29.5 x 20 x 18.5 cm (LWH)</p> <p>Weight: 4.0 kg net / 5.1 kg gross</p>
<b>Mainboard</b>	<p>Mainboard FM20</p> <p>Proprietary mainboard design for K48</p> <p>Chipset: Intel 945GC + ICH7</p>
<b>Power Supply</b>	<p>100 Watt Flex ATX power supply unit</p> <p>Input voltage range: 100~240V AC, 47~63 Hz</p> <p>Active PFC (Power Factor Correction)</p> <p>EMI Certified: FCC, CE, BSMI</p> <p>Safety Certified: UL, TÜV, CB</p> <p>Power plug region specific</p> <p>40 mm cooling fan sensor control</p>
<b>Processor Support</b>	<p>Socket 775 supports Single and Dual Core processors from Intel</p> <p>Supports 533/800/1066 MHz FSB (Front Side Bus)</p> <p>Supports Core 2 Duo E7xxx/E4xxx, Pentium Dual-Core 2xxx and Celeron D 4xx series</p> <p>Supports up to 65W TDP</p> <p>Please refer the support list for detailed processor support information.</p> <p><a href="http://global.shuttle.com/support_list.jsp">http://global.shuttle.com/support_list.jsp</a></p>
<b>Processor Cooling</b>	<p>Processor cooling fan is not included</p> <p>Please purchase an Intel boxed processor..</p> <p>The mainboard supports temperature-controlled RPM fan speed by the BIOS.</p>
<b>Memory Support</b>	<p>2x 240 pin slots, supports Dual Channel</p> <p>supports DDR2-533/667 SDRAM memory</p> <p>Supports up to a total size of 2 GB, max. 1 GB per DIMM</p>
<b>Expansion Slots</b>	<p>No expansion slots</p>
<b>Integrated Graphics</b>	<p>Intel Graphics Media Accelerator 950 (GMA950)</p> <p>with PCI-E x1 improved bandwidth, features 333MHz graphics core</p> <p>DX8/DX9 support and enhanced 3D performance</p> <p>Dynamic Video Memory Technology (DVMT) 3.0</p> <p>Shared Memory max. 224MB</p> <p>Video connectors: Digital DVI and analog Sub-D</p> <p>Supports Dual Monitor operation in Clone mode, only</p>

©2006 by Shuttle Computer Handels GmbH (Germany). All information subject to change without notice. Pictures for illustration purposes only.

<b>6-channel Audio</b>	<p>5.1-channel audio            Audio Realtek® ALC 662 6-channel High-Definition Audio            Three analog audio connectors (3.5mm) at the Back-Panel:            1) Front Line out (head phone)            2) Rear Surround line-out (shared with microphone input)            3) Center line-out (shared with Line in)</p>
<b>LAN Controller</b>	<p>Gigabit Ethernet network controller (Marvell 8056)            Supports 10/100/1000 MBit/s operation            RJ45 back panel connector            Supports Wake-on-LAN function and            PXE (Preboot Execution Environment)</p>
<b>Drive connectors</b>	<p>2x Serial-ATA II, 3 Gbit/s (300 MB/s) bandwidth            1x IDE ATA 100</p>
<b>Front panel</b>	<p>Power button            Power indicator (LED)            HDD indicator (LED)</p>
<b>Back panel connectors</b>	<p>DVI Video (digital)            D-sub Video (analog)            4x USB 2.0            RJ45 LAN connector            PS/2 keyboard connector            PS/2 mouse connector            Serial COM port            Audio Front Line out (head phone)            Audio Rear Surround line-out (shared with microphone input)            Audio Center line-out (shared with Line in)            optional Wireless LAN module (PN20)</p>
<b>Other connectors</b>	<p>2x fan connectors (4 pins)            4x USB 2.0 (two 2x5 pin onboard headers)</p>
<b>Accessories</b>	<p>System installation Guide            1x SATA cable            1x IDE cable            1x Power cord            Driver CD-ROM (32/64 bit)            Screws</p>

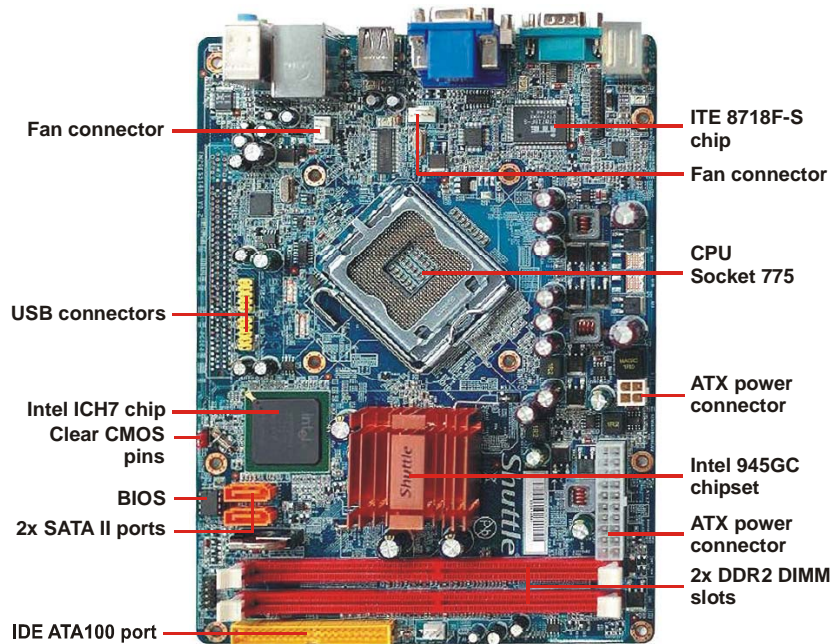
## Connectors and Components

### Front and Back view



- |                                     |                          |                       |
|-------------------------------------|--------------------------|-----------------------|
| 1 5.25" bay for optical drive       | 6 Optional WLAN          | 13 4x USB 2.0 ports   |
| 2 Hard disk LED                     | 7 Optional parallel port | 14 VGA video out      |
| 3 Power LED                         | 8 AC power socket        | 15 Gigabit LAN (RJ45) |
| 4 Power button                      | 9 PS/2 mouse port        | 16 Audio line-in      |
| 5 MyKover – changeable front design | 10 PS/2 keyboard port    | 17 Audio line-out     |
|                                     | 11 Serial port           | 18 Microphone input   |
|                                     | 12 DVI video out         |                       |

### Mainboard



### MyKover – Customize Your Front Panel

1



Unfasten the front panel by removing the four screws. Remove both the transparent glass and the image.

2



Insert the new image and cover back the transparent glass on top.

3



Align and correspond the transparent glass and new image to screw holes on the front of the machine. Carefully screw back the four screws.

4



Congratuation, you have your customized image now.