

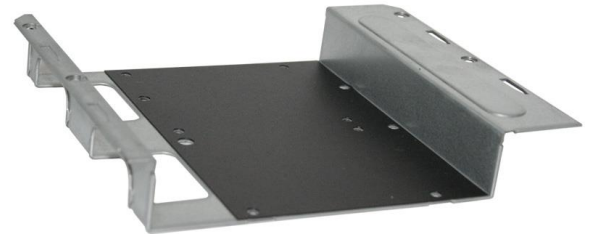
**Shuttle Accessory PHD4:
3.5" Hard Disk Rack for 3L slim PC's**

The PHD4 allows for installation of one 3.5" hard drive. However, doing so means no other drives such as a slimline DVD drive or a 2.5" HDD/SSD can be used.

Feature Highlights

| | |
|------------------------------------|---|
| <p>Scope of delivery</p> | <ul style="list-style-type: none"> • 3.5" HDD bracket (1x) • 3.5" HDD power cable (1x) • Screws (4x) • Quick Installation Guide |
| <p>Compatibility</p> | <ul style="list-style-type: none"> • Compatible with the following Shuttle Slim-PC Barebone models: XH81, XH81V, XH97V, XH110, XH110V, XH170V, XH310, XH310V, XH310R, XH310RV • Not compatible with XG41, XH61, XH61V and XH110G |
| <p>Maximum ambient temperature</p> | <ul style="list-style-type: none"> • <u>Caution:</u> Hard disks in Shuttle XPC slim PC Barebone should only be used at ambient temperatures of up to 40°C. For higher temperatures SSDs are recommended instead. |

**Shuttle Accessory
PHD4**



Shuttle Slim-PC Barebone (3 litres) with built-in Accessory PHD4 including 3.5" hard disk drive.



UPC code: 811686005827
Images for illustration only.

© 2019 by Shuttle Computer Handels GmbH (Germany). All information subject to change without notice . Pictures for illustration purposes only.

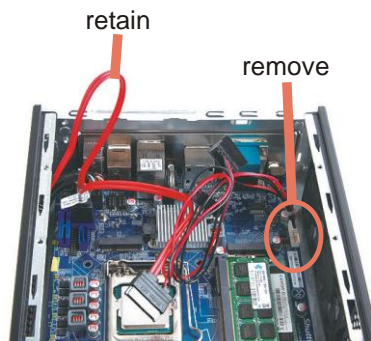
Shuttle Accessory PHD4 – Installation Guide

Important Notes:

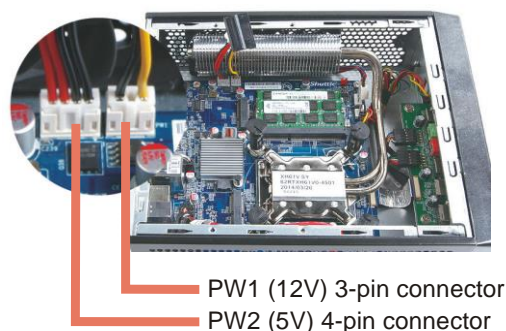
- The accessory PHD4 allows for installation of one 3.5" hard disk in a Shuttle XH81/XH97 barebone PC. Please note that the optical drive bay will be occupied then.
- Due to safety reasons, please turn off your computer completely first and unplug it from the power supply.
- Please note that no optical drive can be installed, if a 3.5" hard disk is used.

Installation of the hard disk rack:

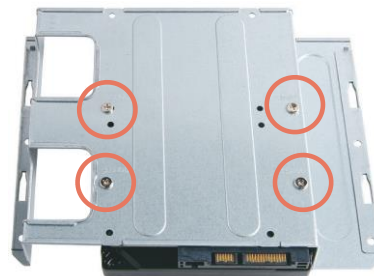
1. Unscrew the two thumbscrews of the chassis cover. Slide the cover backward and upward.
2. Unplug the SATA and power cables from the HDD/ODD and remove the racks plus the CPU thermal module.
Note: Disassembly depending on barebone model. Please refer to the relevant Quick Installation Guide when disassembling the HDD/ODD or CPU cooling.
3. Untie all cables and remove the HDD/ODD SATA power cable from the motherboard as shown in the picture below.



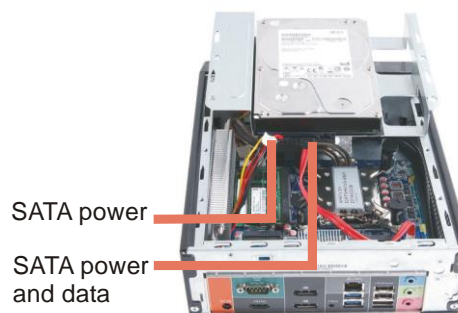
4. Please connect the 3.5" HDD power connectors to PW1 (3-pin) and PW2 (4-pin), then proceed to install the CPU thermal module.



Place the 3.5" HDD on the bracket and secure with four screws.



5. Connect the Serial ATA and power cables to the 3.5" HDD.



6. Slide the rack back into the chassis and refasten four screws.



7. Replace the cover and refasten the thumbscrew