

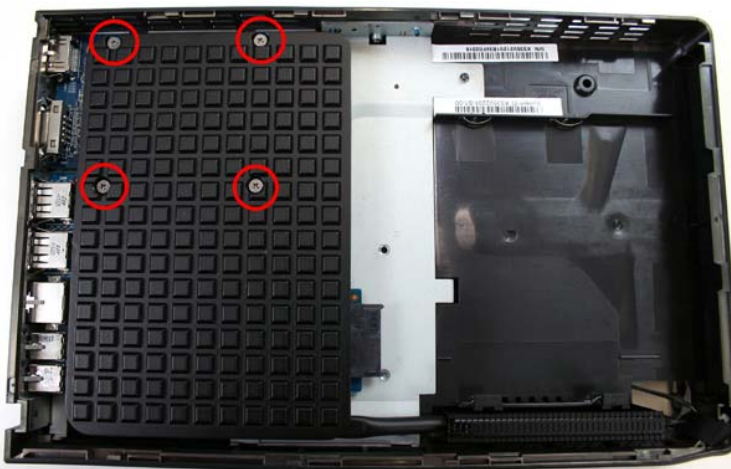
**Note:** Please disconnect all cables from the PC before you start with the installation of PHD2. The following steps should only be performed by experienced users who are familiar with the installation of PC hardware to avoid possible damage due to improper handling.



1. Remove the stand of the PC by undoing one screw.



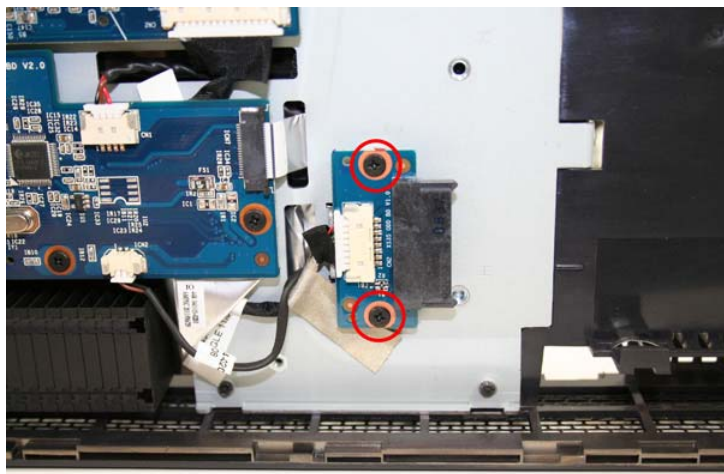
2. Unfasten the screw at the back panel of the PC and remove the two covers of the chassis.



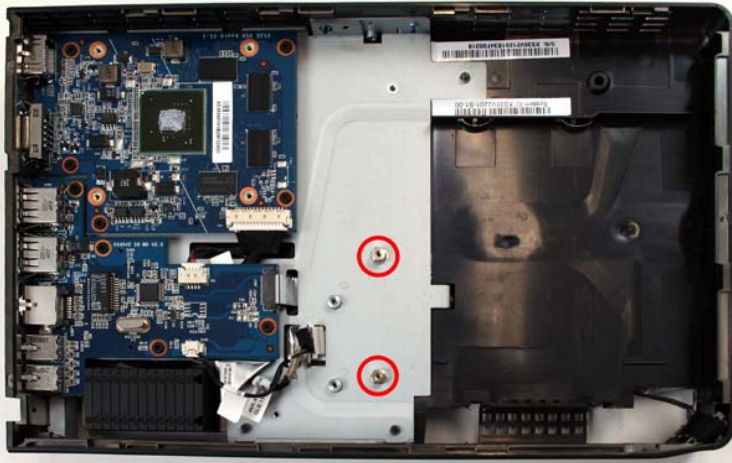
3. Turn the PC upside down (mainboard facing downwards, components side upwards)



4. Unfasten four screws of the black heat-pipe cooling sink and remove it.



5. Unfasten two screws of the adapter board for the optical drive and remove it.



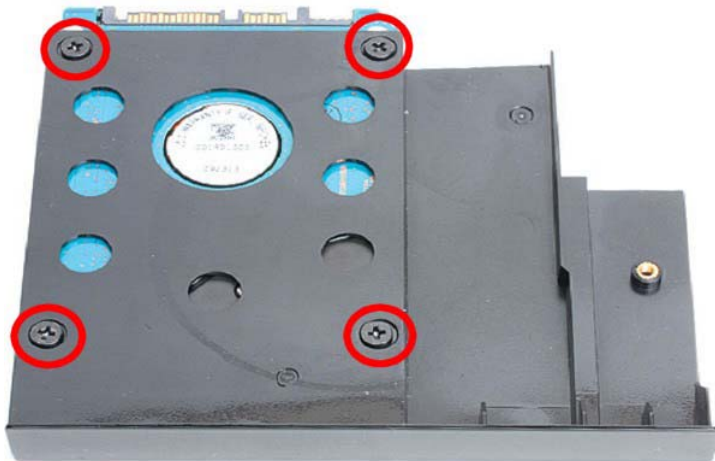
6. Install the two provided spacer screws onto the chassis.



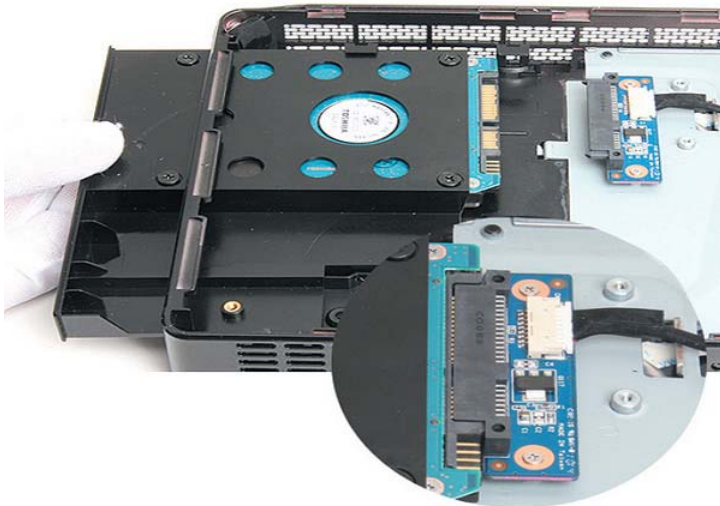
7. Install the PHD2 adapter board with two screws onto the spacer screws.



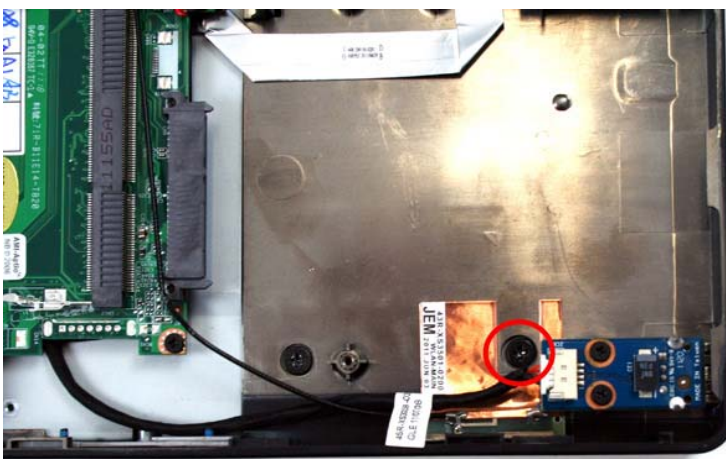
8. Pull out the cable a bit, so it can be connected to the PCH2 adapter board.



9. Put your 2.5" storage drive into the PHD2 plastic frame and affix it with the four screws provided.

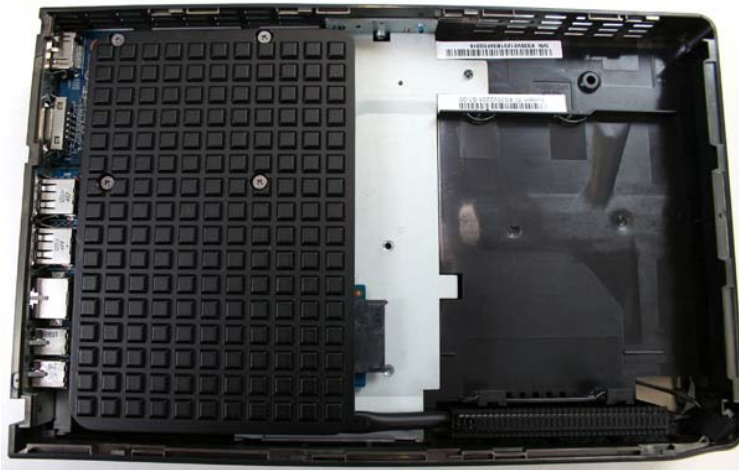


10. Push the PHD2 plastic frame through the opening for the optical drive until the CN9 connector locks to the PHD2- adapter board.



11. Turn the PC and fasten the PHD2 plastic frame with one screw.

©2009 by Shuttle Computer Handels GmbH (Germany). All information subject to change without notice. Pictures for illustration purposes only.



12. Turn the PC again and install the heat-pipe cooling sink.



13. Re-install the two covers of the chassis with one screw.



14. Re-install the stand with one screw.

©2009 by Shuttle Computer Handels GmbH (Germany). All information subject to change without notice. Pictures for illustration purposes only.